

Revised



**WASHOE COUNTY SCHOOL DISTRICT
ZONING ADVISORY COMMITTEE**

Tuesday, December 17, 2019 at 5:30 P.M.

Pine Middle School
4800 Neil Road
Reno, Nevada 89502

AGENDA

1. OPENING ITEMS

- 1.01 Call to Order – 5:30 P.M., Pine Middle School, 4800 Neil Road, Reno, Nevada 89502
- 1.02 Roll Call
- 1.03 Public Comment - Comments from the public are invited at this time on topics not specifically addressed elsewhere in the agenda. A "Citizen's Request to Speak" card should be filled out and submitted to the Recording Secretary before speaking during the Public Comment section. All persons are limited to 3 minutes per item. In accordance with Open Meeting Law and on the advice of legal counsel, the public body is discouraged from discussing and precluded from deliberating and/or acting on items raised by Public Comment which are not already on the agenda. The public body may impose reasonable content-neutral restrictions on public comment such as willfully disruptive comments that are irrelevant, repetitious, slanderous, offensive, inflammatory, irrational, or amounting to personal attacks or interfering with the rights of other speakers. Correspondence or written materials submitted for public comment by the general public shall be attached to the minutes of the meeting.

2. ITEMS FOR DISCUSSION, PRESENTATION AND/OR ACTION (Public comment: any individual may address the public body concerning any item listed below. A completed "Citizen's Right to Speak" card must be submitted to the public body at the meeting. During the discussion of each item on the agenda, the Chair will invite the individual to come forward to speak. Individuals are limited to three minutes per item.)

- 2.01 Action to Adopt the Agenda – Items on this agenda may be taken out of order; The Public Body may combine two or more agenda items for consideration; and The Public Body may remove an item from the agenda or delay discussion relating to an item on the agenda at any time. (For Possible Action).
- 2.02 Discussion and Possible Approval of the Minutes from the November 21, 2019 Zoning Advisory Committee Meeting (For Possible Action)
- 2.03 Discussion and possible action to Make Recommendations to the WCSD Board of Trustees Regarding high school attendance zone changes, including Galena High School and Reno High School stemming from the zoning of Marce Herz

-
- Middle School and associated changes to Pine Middle School affecting students enrolled at Huffaker Elementary School. (For Possible Action)
- 2.04 Discussion and possible action to Make Recommendations to the WCSD Board of Trustees regarding high school zone changes, including Damonte Ranch High School, Wooster High School and Galena High School stemming from the zoning of Marce Herz Middle School, affecting students enrolled at Corbett Elementary School and Loder Elementary School. (For Possible Action)
- 2.05 Discussion and possible action to Make Recommendations to the WCSD Board of Trustees regarding high school zone changes, including Damonte Ranch High School, Galena High School, and Wooster HS, stemming from the zoning of Marce Herz Middle School, affecting students enrolled at Dodson Elementary School, Donner Springs Elementary School, Hidden Valley Elementary School, and Smithridge Elementary School. (For Possible Action)
- 2.06 Discussion regarding a new elementary school being built in the Cold Springs area and potential zoning changes that could affect Gomes Elementary School, Silver Lake Elementary School, Cold Springs Middle School and O'Brien Middle School (For Discussion Only).
- 2.07 Discussion regarding the new Procter Hug High School being built in the Wildcreek area and potential zoning boundaries that could affect the Spanish Springs High School and current Hug High School zoning boundaries (For Discussion Only).

3. CLOSING ITEMS

- 3.01 Announcement of Next Regular Meeting – January 16, 2020, 5:30 P.M., location to be determined.
- 3.02 Public Comment - Comments from the public are invited at this time on topics not specifically addressed elsewhere in the agenda. A "Citizen's Request to Speak" card should be filled out and submitted to the Recording Secretary before speaking during the Public Comment section. All persons are limited to 3 minutes per item. In accordance with Open Meeting Law and on the advice of legal counsel, the public body is discouraged from discussing and precluded from deliberating and/or acting on items raised by Public Comment which are not already on the agenda. The public body may impose reasonable content-neutral restrictions on public comment such as willfully disruptive comments that are irrelevant, repetitious, slanderous, offensive, inflammatory, irrational, or amounting to personal attacks or interfering with the rights of other speakers. Correspondence or written materials submitted for public comment by the general public shall be attached to the minutes of the meeting.
- 3.03 Adjourn Meeting

Forum Restrictions and Orderly Conduct of Business: The Zoning Advisory Committee conducts the business of the Washoe County School District during its meetings. The presiding officer may order the removal of any person whose statement or other conduct disrupts the orderly, efficient or safe conduct of the meeting. Warnings against disruptive comments or behavior may or may not be given prior to removal. The viewpoint of a speaker will not be restricted, but reasonable restrictions may be imposed upon the time, place and manner of speech. Irrelevant and unduly repetitious statements and personal attacks which antagonize or incite others are examples of speech that may be reasonably limited.

Members of the public wishing to request supporting materials for this meeting or who are disabled and require special accommodations at the meeting should contact the Board Services Department. The Board Services Department can be contacted in writing at PO Box 30425, Reno, Nevada 89520-3425, by telephone at 775-789-4621, or by email at lascurry@washoeschools.net.

This agenda and supporting materials, when appropriate, have been posted at the following locations:

www.washoeschools.net

www.boarddocs.com/nv/washoe/Board.nsf/Public

State of Nevada website (notice.nv.gov)

WCSD Central Administrative Building

Washoe County Administration Building

Washoe County Courthouse

Reno City Hall

Sparks City Hall

Sparks Library

Pyramid Lake Paiute Tribe Administration Building

Reno Sparks Indian Colony Administrative Office

Pine Middle School

Agenda item 2.03

Discussion and possible action to Make Recommendations to the WCSD Board of Trustees Regarding high school attendance zone changes, including Galena High School and Reno High School stemming from the zoning of Marce Herz Middle School and associated changes to Pine Middle School affecting students enrolled at Huffaker Elementary School.

(For Possible Action)

Huffaker area
Option #1
Current HS Attendance
Zone Boundaries

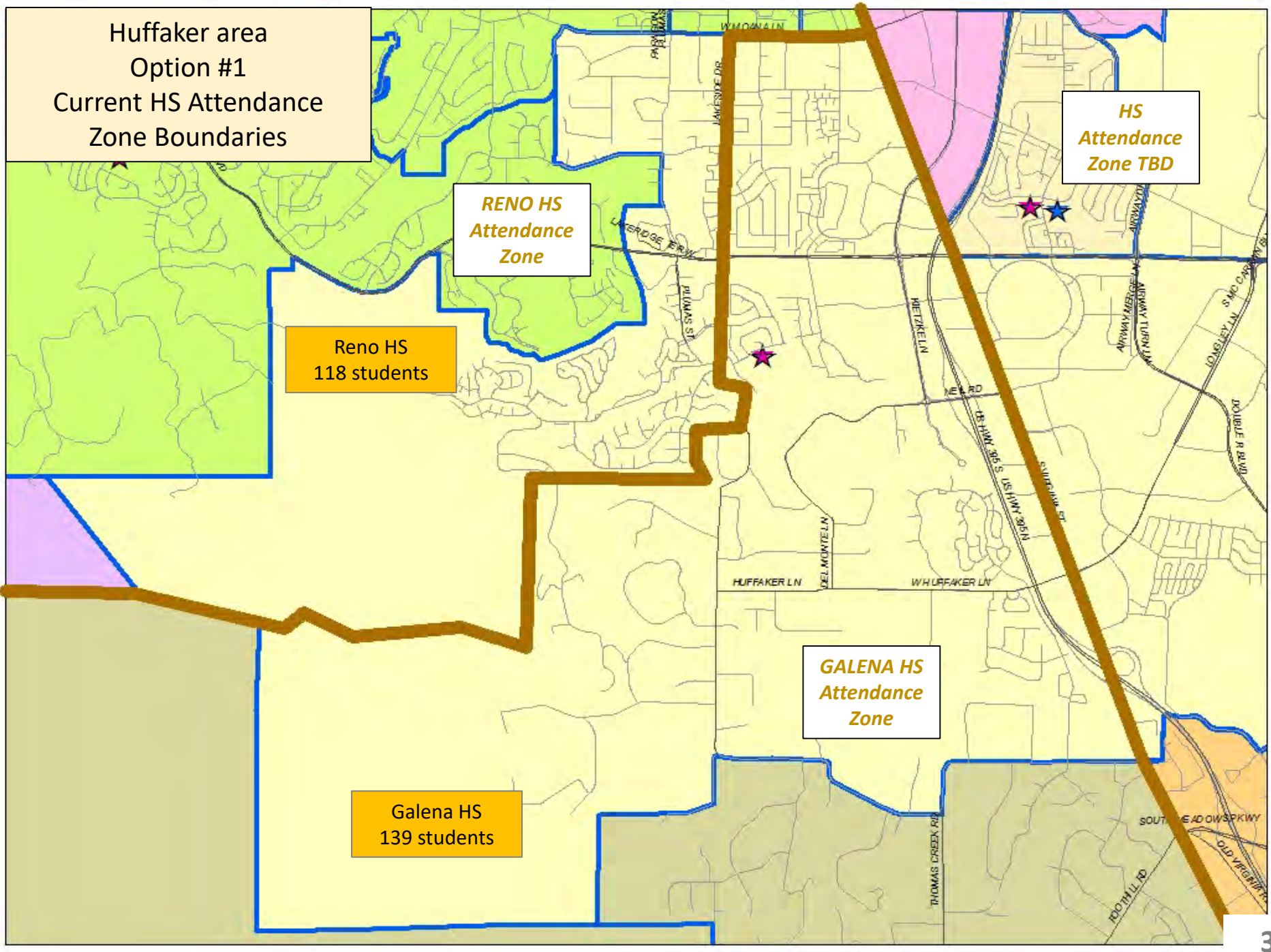
*HS
Attendance
Zone TBD*

*RENO HS
Attendance
Zone*

Reno HS
118 students

*GALENA HS
Attendance
Zone*

Galena HS
139 students



Capacities and projected enrollments, after proposed rezoning actions *													
High School	Capacities		Current Enroll. 10/1/2019	Projected Enrollments									
	Max.	Additional Temporary		2020/21	2021/22	2022/23	2023/24	2024/25	2025/26	2026/27	2027/28	2028/29	2029/30
GALENA *	1,893	0	1,494 79%	1,513 80%	1,543 82%	1,540 81%	1,504 79%	1,526 81%	1,526 81%	1,596 84%	1,603 85%	1,633 86%	1,676 89%
RENO	2,162	75	1,728 80%	1,767 82%	1,794 83%	1,906 88%	1,899 88%	1,890 87%	1,860 86%	1,937 90%	1,954 90%	1,971 91%	2,000 93%

Open Wildcreek HS (2022/23)

All proposed HS zone changes (2021/22)

Open Hug CTE (2023/24)

* - assumes approval of proposed rezoning action for Corbett, Loder and Smithridge under agenda item 2.04

Huffaker area
Option #2
Entire Area Zoned
to Reno HS

**RENO HS
Attendance
Zone**

**HS
Attendance
Zone TBD**

Galena HS to
Reno HS
= 139 students

**GALENA HS
Attendance
Zone**

Capacities and projected enrollments, after proposed rezoning actions *

High School	Capacities		Current Enroll. 10/1/2019	Projected Enrollments									
	Max.	Additional Temporary		2020/21	2021/22	2022/23	2023/24	2024/25	2025/26	2026/27	2027/28	2028/29	2029/30
GALENA *	1,893	0	1,494 79%	1,513 80%	1,543 82%	1,540 81%	1,504 79%	1,526 81%	1,526 81%	1,596 84%	1,603 85%	1,633 86%	1,676 89%
RENO	2,162	75	1,728 80%	1,767 82%	1,794 83%	1,906 88%	1,899 88%	1,890 87%	1,860 86%	1,937 90%	1,954 90%	1,971 91%	2,000 93%
					Open Wildcreek HS (2022/23)								
				All proposed HS zone changes (2021/22)		Open Hug CTE (2023/24)							

Rezone all of Huffaker to Reno HS

High School	Capacities		Current Enroll. 10/1/2019	Projected Enrollments									
	Max.	Additional Temporary		2020/21	2021/22	2022/23	2023/24	2024/25	2025/26	2026/27	2027/28	2028/29	2029/30
GALENA *	1,893	0	1,494 79%	1,513 80%	1,465 77%	1,423 75%	1,347 71%	1,363 72%	1,357 72%	1,421 75%	1,423 75%	1,448 77%	1,490 79%
RENO	2,162	75	1,728 80%	1,767 82%	1,873 87%	2,024 94%	2,055 95%	2,053 95%	2,029 94%	2,112 98%	2,134 99%	2,155 100%	2,187 101%
					Open Wildcreek HS (2022/23)								
				All proposed HS zone changes (2021/22)		Open Hug CTE (2023/24)							

* - Projected enrollment figures for Galena HS assume that areas of Corbett, Loder and Smithridge elementary schools currently zoned for Galena will be rezoned to other high schools

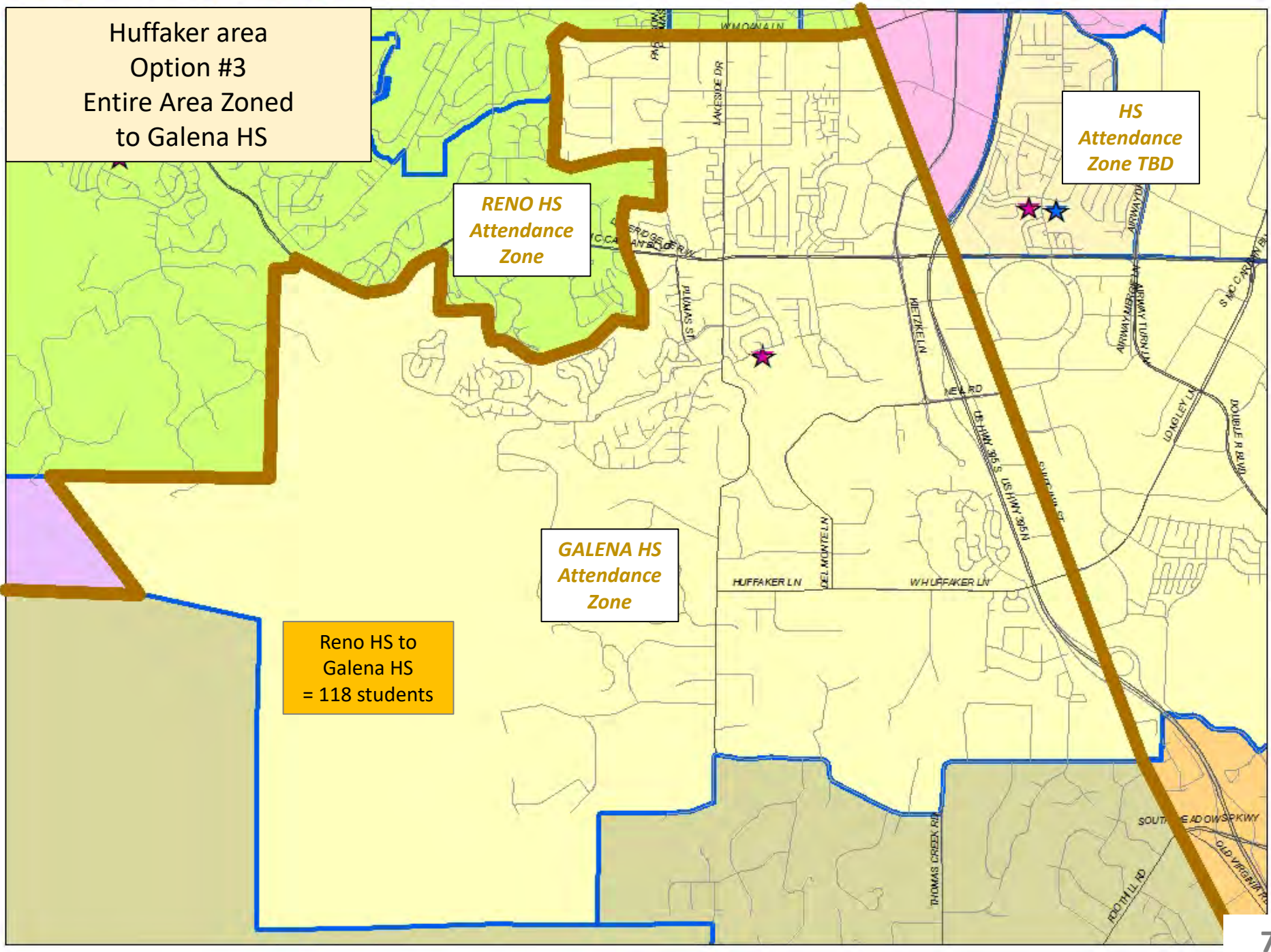
Huffaker area
Option #3
Entire Area Zoned
to Galena HS

*HS
Attendance
Zone TBD*

*RENO HS
Attendance
Zone*

*GALENA HS
Attendance
Zone*

Reno HS to
Galena HS
= 118 students



Capacities and projected enrollments, after proposed rezoning actions *

High School	Capacities		Current Enroll. 10/1/2019	Projected Enrollments									
	Max.	Additional Temporary		2020/21	2021/22	2022/23	2023/24	2024/25	2025/26	2026/27	2027/28	2028/29	2029/30
GALENA *	1,893	0	1,494 79%	1,513 80%	1,543 82%	1,540 81%	1,504 79%	1,526 81%	1,526 81%	1,596 84%	1,603 85%	1,633 86%	1,676 89%
RENO	2,162	75	1,728 80%	1,767 82%	1,794 83%	1,906 88%	1,899 88%	1,890 87%	1,860 86%	1,937 90%	1,954 90%	1,971 91%	2,000 93%
					Open Wildcreek HS (2022/23)								
				All proposed HS zone changes (2021/22)		Open Hug CTE (2023/24)							

Rezone all of Huffaker to Galena HS

High School	Capacities		Current Enroll. 10/1/2019	Projected Enrollments									
	Max.	Additional Temporary		2020/21	2021/22	2022/23	2023/24	2024/25	2025/26	2026/27	2027/28	2028/29	2029/30
GALENA *	1,893	0	1,494 79%	1,513 80%	1,601 85%	1,627 86%	1,618 85%	1,641 87%	1,641 87%	1,711 90%	1,718 91%	1,748 92%	1,791 95%
RENO	2,162	75	1,728 80%	1,767 82%	1,736 80%	1,820 84%	1,784 83%	1,776 82%	1,745 81%	1,822 84%	1,839 85%	1,856 86%	1,885 87%
					Open Wildcreek HS (2022/23)								
				All proposed HS zone changes (2021/22)		Open Hug CTE (2023/24)							

* - Projected enrollment figures for Galena HS assume that areas of Corbett, Loder and Smithridge elementary schools currently zoned for Galena will be rezoned to other high schools

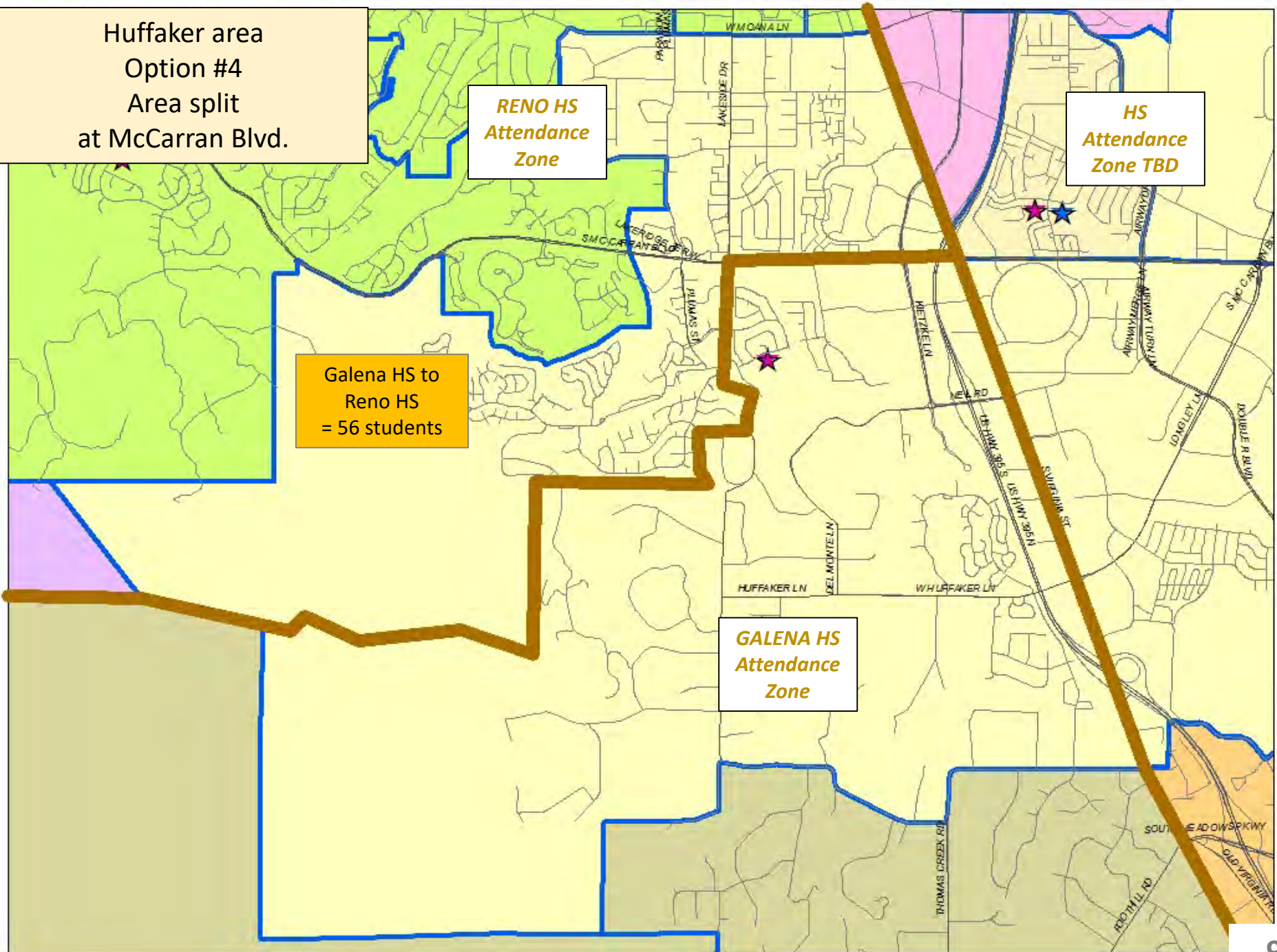
Huffaker area
Option #4
Area split
at McCarran Blvd.

**RENO HS
Attendance
Zone**

**HS
Attendance
Zone TBD**

Galena HS to
Reno HS
= 56 students

**GALENA HS
Attendance
Zone**



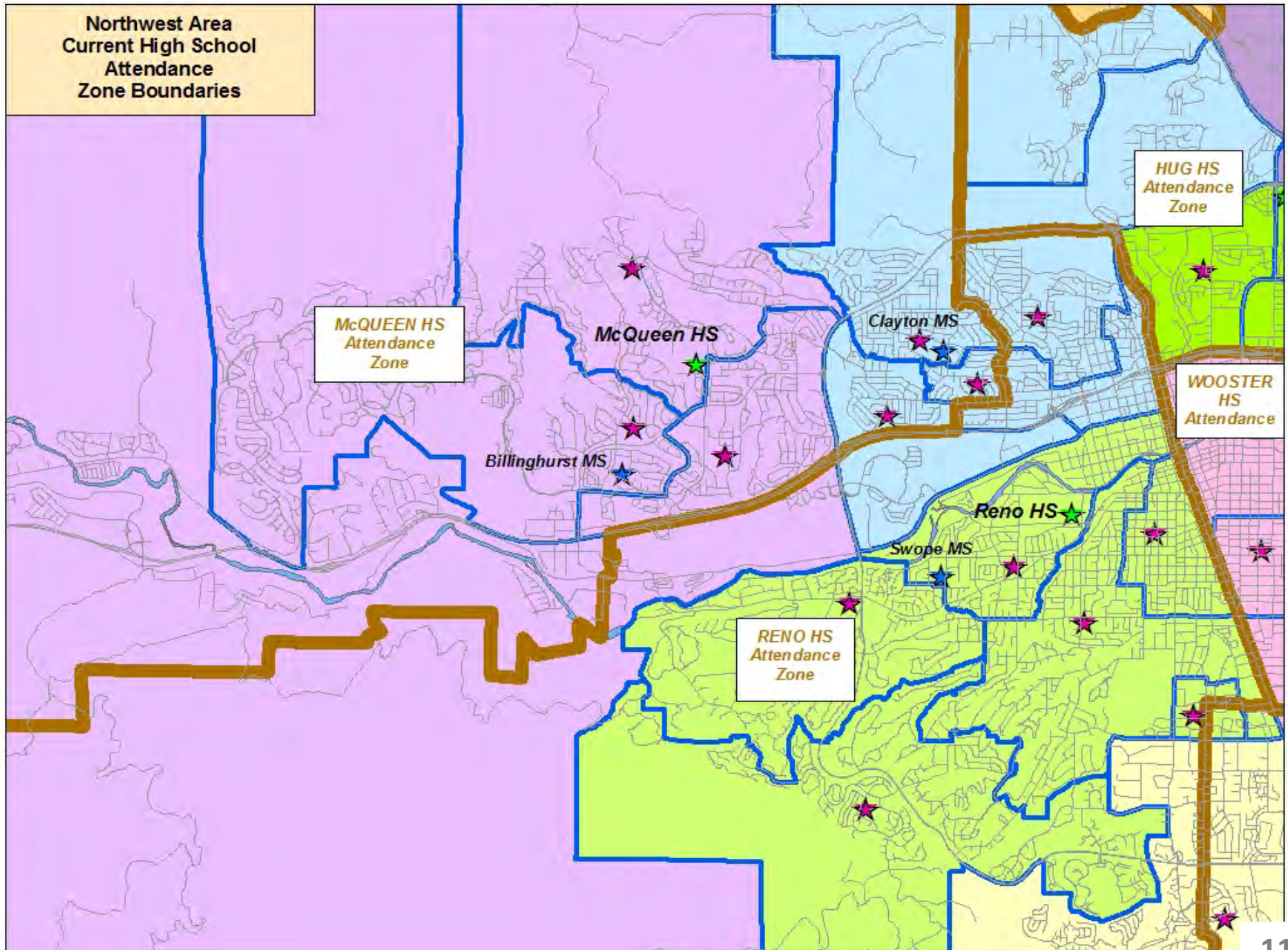
Capacities and projected enrollments, after proposed rezoning actions *

High School	Capacities		Current Enroll. 10/1/2019	Projected Enrollments									
	Max.	Additional Temporary		2020/21	2021/22	2022/23	2023/24	2024/25	2025/26	2026/27	2027/28	2028/29	2029/30
GALENA *	1,893	0	1,494 79%	1,513 80%	1,543 82%	1,540 81%	1,504 79%	1,526 81%	1,526 81%	1,596 84%	1,603 85%	1,633 86%	1,676 89%
RENO	2,162	75	1,728 80%	1,767 82%	1,794 83%	1,906 88%	1,899 88%	1,890 87%	1,860 86%	1,937 90%	1,954 90%	1,971 91%	2,000 93%
					Open Wildcreek HS (2022/23)								
				All proposed HS zone changes (2021/22)		Open Hug CTE (2023/24)							

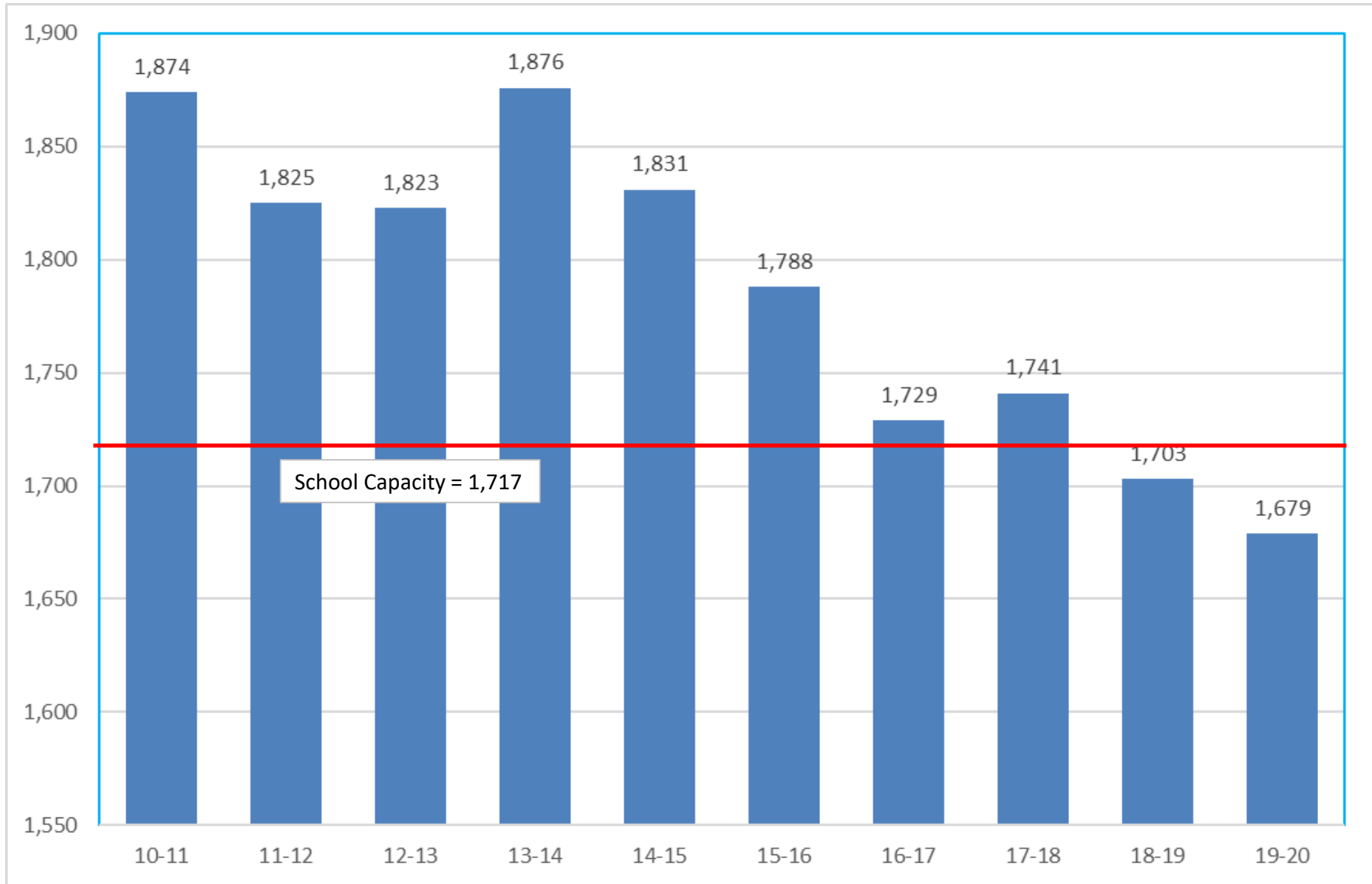
Rezone all of Huffaker area north of McCarran Blvd. to Reno HS

High School	Capacities		Current Enroll. 10/1/2019	Projected Enrollments									
	Max.	Additional Temporary		2020/21	2021/22	2022/23	2023/24	2024/25	2025/26	2026/27	2027/28	2028/29	2029/30
GALENA	1,893	0	1,494 79%	1,513 80%	1,516 80%	1,499 79%	1,448 76%	1,470 78%	1,471 78%	1,540 81%	1,547 82%	1,577 83%	1,621 86%
RENO	2,162	75	1,728 80%	1,767 82%	1,822 84%	1,948 90%	1,954 90%	1,946 90%	1,916 89%	1,993 92%	2,010 93%	2,027 94%	2,056 95%
					Open Wildcreek HS (2022/23)								
				All proposed HS zone changes (2021/22)		Open Hug CTE (2023/24)							

**Northwest Area
Current High School
Attendance
Zone Boundaries**



Robert McQueen HS Enrollment – SY 2010/11 through 2019/20



Note: SY 19/20 enrollment figure is preliminary pending validation

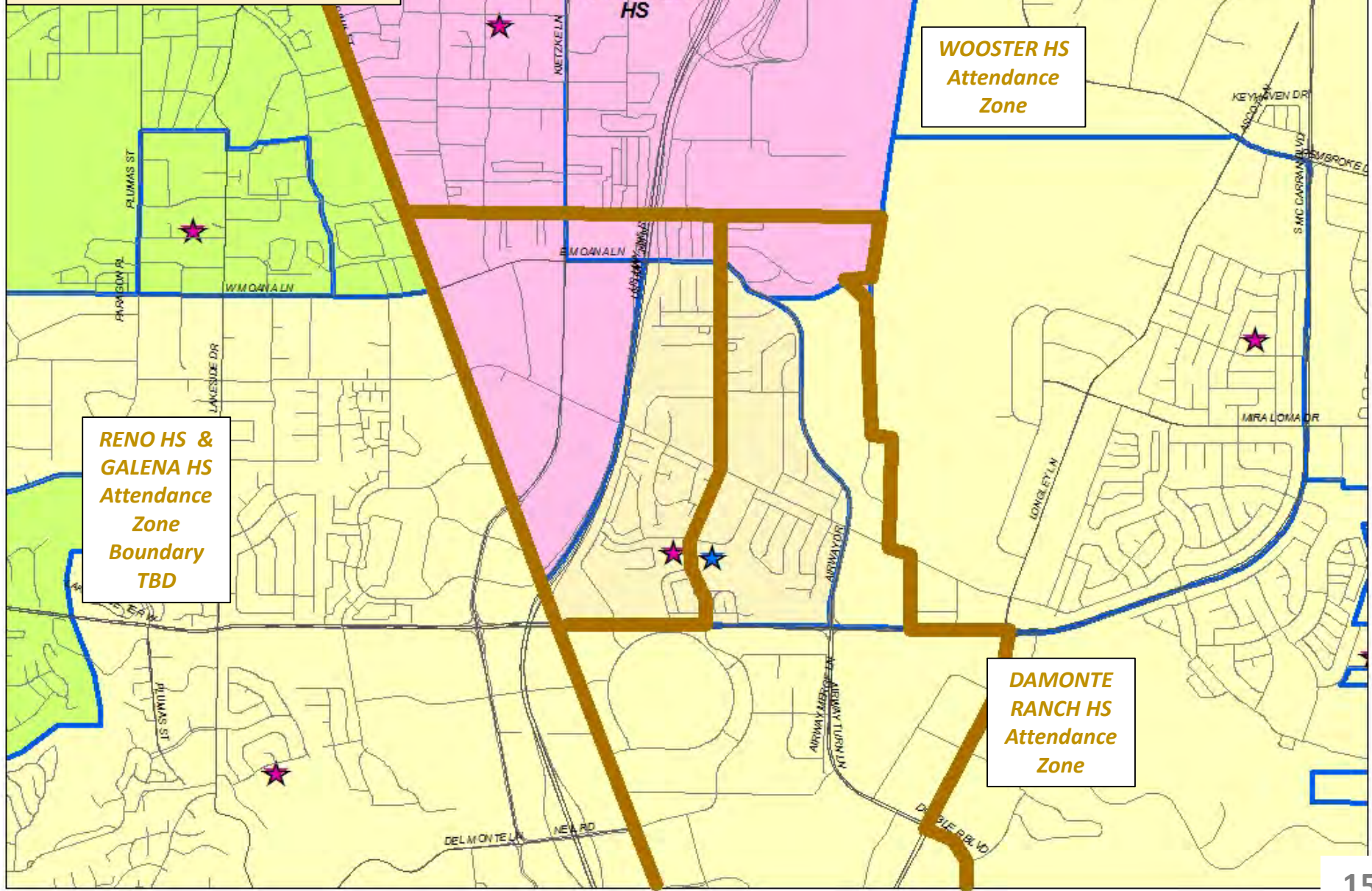
SUMMARY OF OPTIONS FOR HUFFAKER ES AREA			School Capacity Impact	
Option	Description	Students impacted	Galena HS	Reno HS
#1	No Change; maintain current split between Galena HS and Reno HS	No students rezoned	2024 = 81% 2029 = 89%	2024 = 87% 2029 = 93%
#2	All of Huffaker zoned to Reno HS	139 students rezoned from Galena HS to Reno HS	2024 = 72% 2029 = 79%	2024 = 96% 2029 = 101%
#3	All of Huffaker zoned to Galena HS	118 students rezoned from Reno HS to Galena HS	2024 = 87% 2029 = 95%	2024 = 82% 2029 = 87%
#4	Huffaker split at McCarran Blvd.	56 students rezoned from Galena HS to Reno HS	2024 = 78% 2029 = 90%	2024 = 86% 2029 = 95%

Agenda item 2.04

Discussion and possible action to Make Recommendations to the WCSD Board of Trustees regarding high school zone changes, including Wooster High School, Damonte Ranch High School, and Galena High School stemming from the zoning of Marce Herz Middle School, affecting students enrolled at Corbett Elementary School and Loder Elementary School.

(For Possible Action)

South Corbett & Loder area
Current HS Attendance
Zones



**WOOSTER HS
Attendance
Zone**

**RENO HS &
GALENA HS
Attendance
Zone
Boundary
TBD**

**DAMONTE
RANCH HS
Attendance
Zone**

South Corbett & Loder area
Current HS Attendance
Zones

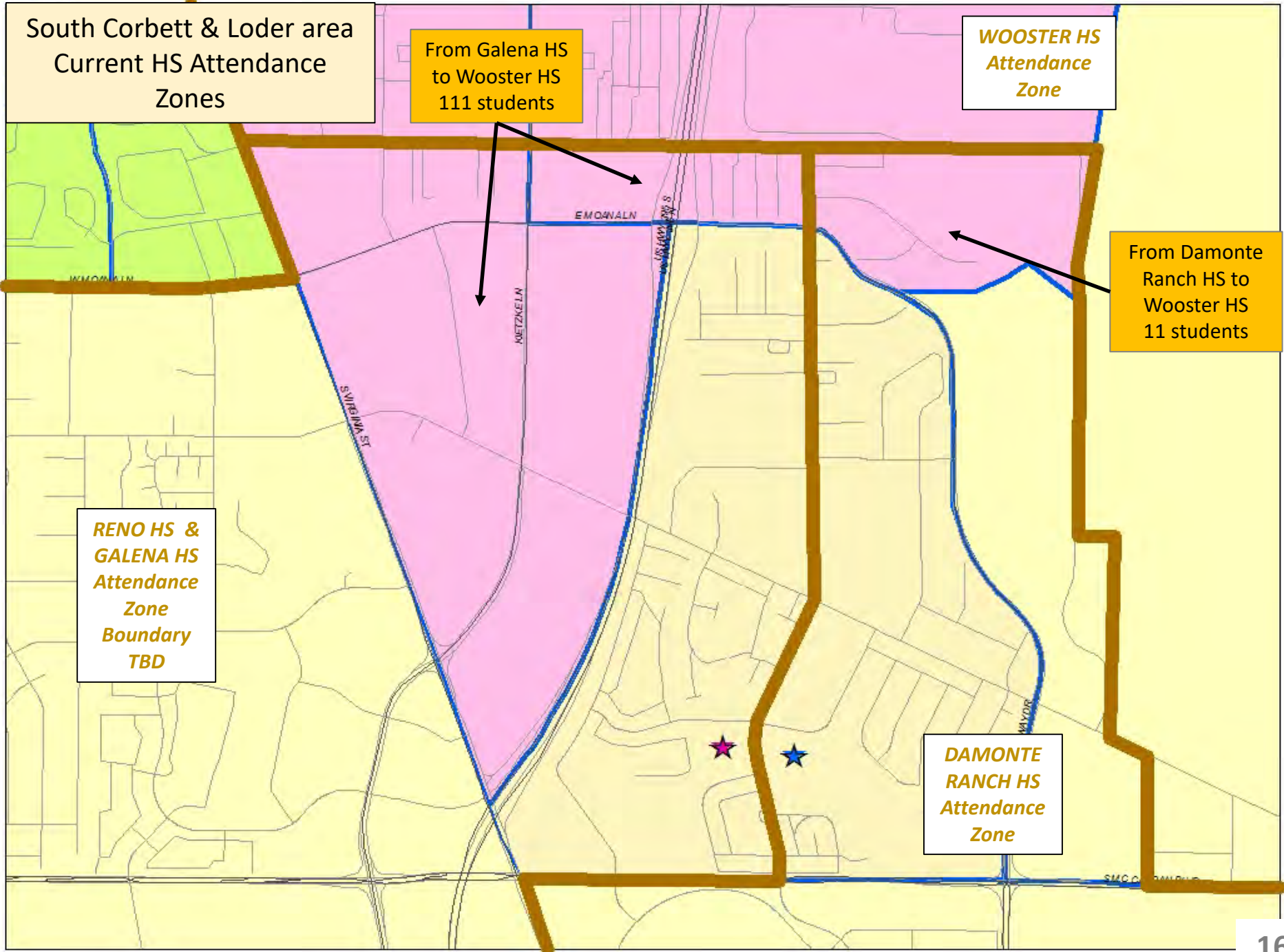
From Galena HS
to Wooster HS
111 students

WOOSTER HS
Attendance
Zone

From Damonte
Ranch HS to
Wooster HS
11 students

**RENO HS &
GALENA HS**
Attendance
Zone
Boundary
TBD

**DAMONTE
RANCH HS**
Attendance
Zone



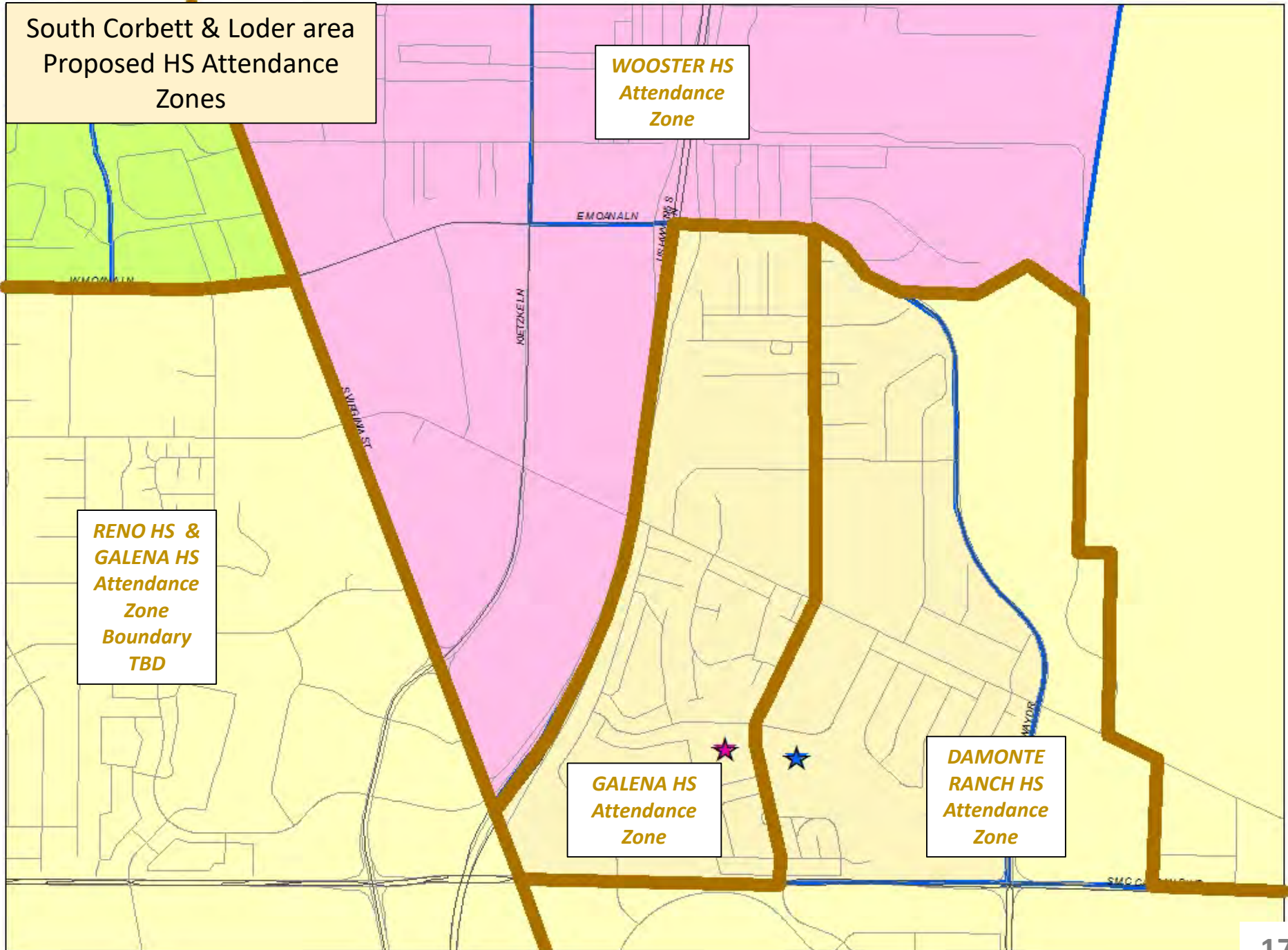
South Corbett & Loder area
Proposed HS Attendance
Zones

**WOOSTER HS
Attendance
Zone**

**RENO HS &
GALENA HS
Attendance
Zone
Boundary
TBD**

**GALENA HS
Attendance
Zone**

**DAMONTE
RANCH HS
Attendance
Zone**



Capacities and Projected enrollments, based on recommended boundary changes to date

High School	Capacities		Current Enroll. 10/1/2019	Projected Enrollments									
	Max.	Additional Temporary		2020/21	2021/22	2022/23	2023/24	2024/25	2025/26	2026/27	2027/28	2028/29	2029/30
DAMONTE RANCH	2,170	200	1,829 84%	1,897 87%	1,680 77%	1,549 71%	1,360 63%	1,341 62%	1,297 60%	1,321 61%	1,341 62%	1,399 64%	1,448 67%
GALENA	1,893	0	1,494 79%	1,513 80%	1,723 91%	1,809 96%	1,862 98%	1,884 100%	1,885 100%	1,954 103%	1,961 104%	1,991 105%	2,035 107%
WOOSTER	1,796	0	1,604 89%	1,649 92%	1,716 96%	1,663 93%	1,699 95%	1,635 91%	1,586 88%	1,614 90%	1,618 90%	1,630 91%	1,652 92%
						Open Wildcreek HS (2022/23)							
					All proposed HS zone changes (2021/22)		Open Hug CTE (2023/24)						

Rezone areas of Corbett and Loder from Damonte Ranch HS and Galena HS to Wooster HS

High School	Capacities		Current Enroll. 10/1/2019	Projected Enrollments									
	Max.	Additional Temporary		2020/21	2021/22	2022/23	2023/24	2024/25	2025/26	2026/27	2027/28	2028/29	2029/30
DAMONTE RANCH	2,170	200	1,829 84%	1,897 87%	1,674 77%	1,541 71%	1,349 62%	1,330 61%	1,286 59%	1,310 60%	1,330 61%	1,388 64%	1,437 66%
GALENA	1,893	0	1,494 79%	1,513 80%	1,667 88%	1,726 91%	1,751 92%	1,773 94%	1,774 94%	1,843 97%	1,850 98%	1,880 99%	1,924 102%
WOOSTER	1,796	0	1,604 89%	1,649 92%	1,777 99%	1,754 98%	1,821 101%	1,757 98%	1,708 95%	1,736 97%	1,740 97%	1,752 98%	1,774 99%
						Open Wildcreek HS (2022/23)							
					All proposed HS zone changes (2021/22)		Open Hug CTE (2023/24)						

Agenda item 2.05

Discussion and possible action to Make Recommendations to the WCSD Board of Trustees regarding high school zone changes, including Damonte Ranch High School, Galena High School, and Wooster HS, stemming from the zoning of Marce Herz Middle School, affecting students enrolled at Dodson Elementary School, Donner Springs Elementary School, Hidden Valley Elementary School, and Smithridge Elementary School.

(For Possible Action)

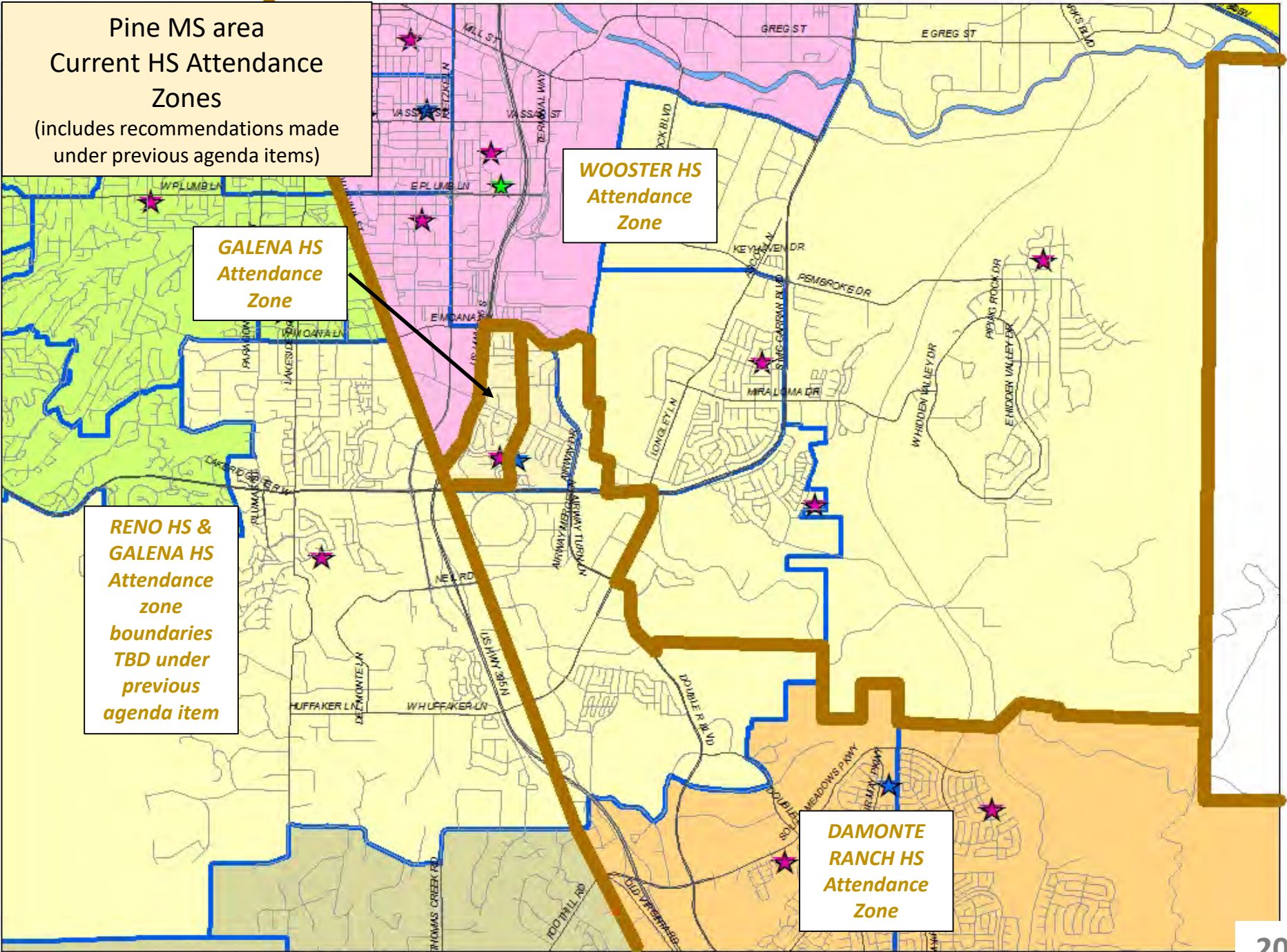
Pine MS area
Current HS Attendance
Zones
(includes recommendations made under previous agenda items)

GALENA HS Attendance Zone

WOOSTER HS Attendance Zone

RENO HS & GALENA HS Attendance zone boundaries TBD under previous agenda item

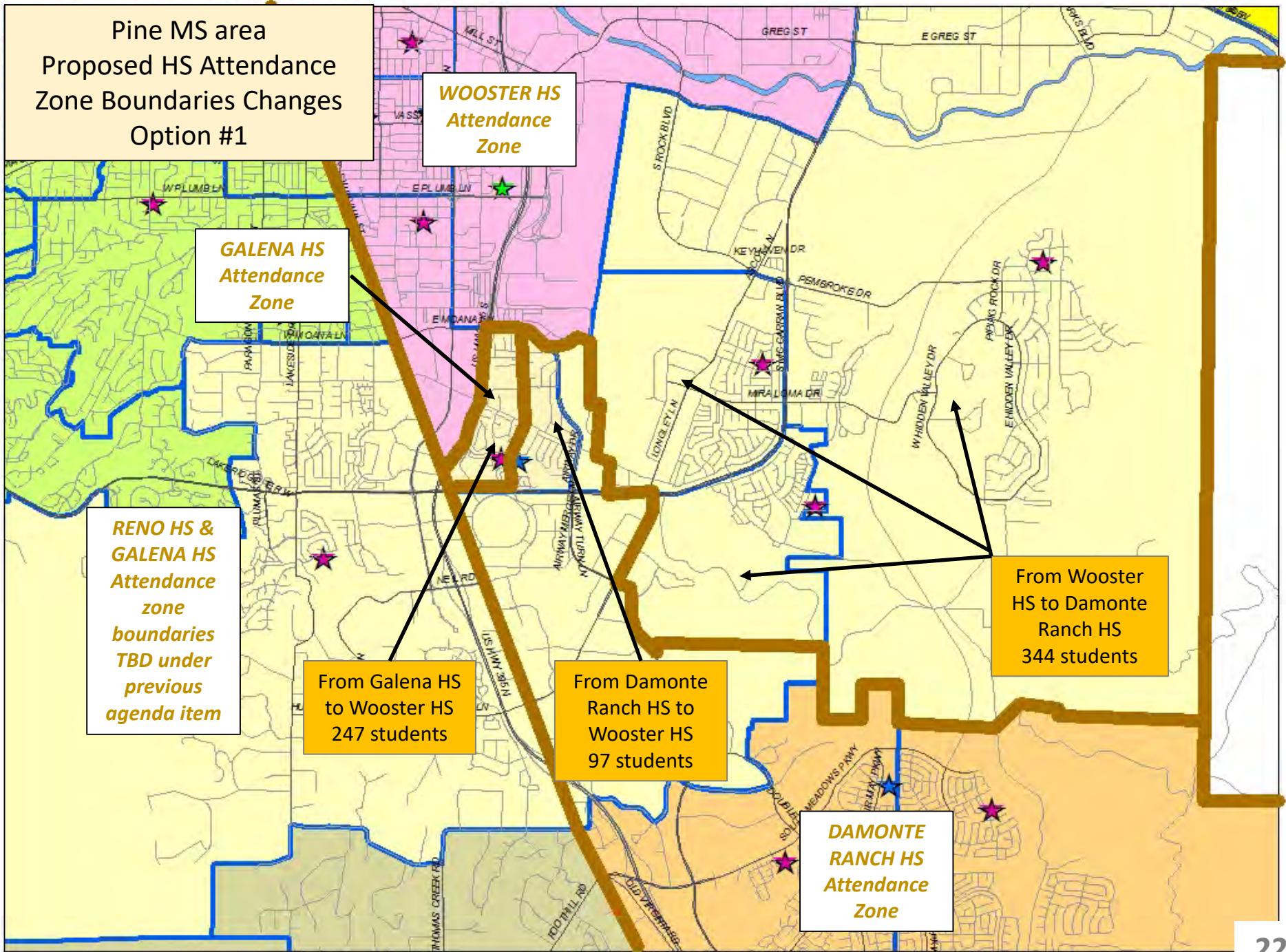
DAMONTE RANCH HS Attendance Zone



Current High School Attendance Zones, including recommendations made under previous agenda items

Capacities and projected enrollments, after proposed rezoning actions													
High School	Capacities		Current Enroll. 10/1/2019	Projected Enrollments									
	Max.	Additional Temporary		2020/21	2021/22	2022/23	2023/24	2024/25	2025/26	2026/27	2027/28	2028/29	2029/30
DAMONTE RANCH	2,170	200	1,829 84%	1,897 87%	1,674 77%	1,543 71%	1,368 63%	1,366 63%	1,340 62%	1,381 64%	1,419 65%	1,498 69%	1,569 72%
WOOSTER	1,796	0	1,604 89%	1,649 92%	1,776 99%	1,751 97%	1,800 100%	1,719 96%	1,653 92%	1,664 93%	1,650 92%	1,641 91%	1,641 91%
					Open Wildcreek HS (2022/23)								
				All proposed HS zone changes (2021/22)		Open Hug CTE (2023/24)							

Pine MS area
Proposed HS Attendance
Zone Boundaries Changes
Option #1



**WOOSTER HS
Attendance
Zone**

**GALENA HS
Attendance
Zone**

**RENO HS &
GALENA HS
Attendance
zone
boundaries
TBD under
previous
agenda item**

From Galena HS
to Wooster HS
247 students

From Damonte
Ranch HS to
Wooster HS
97 students

From Wooster
HS to Damonte
Ranch HS
344 students

**DAMONTE
RANCH HS
Attendance
Zone**

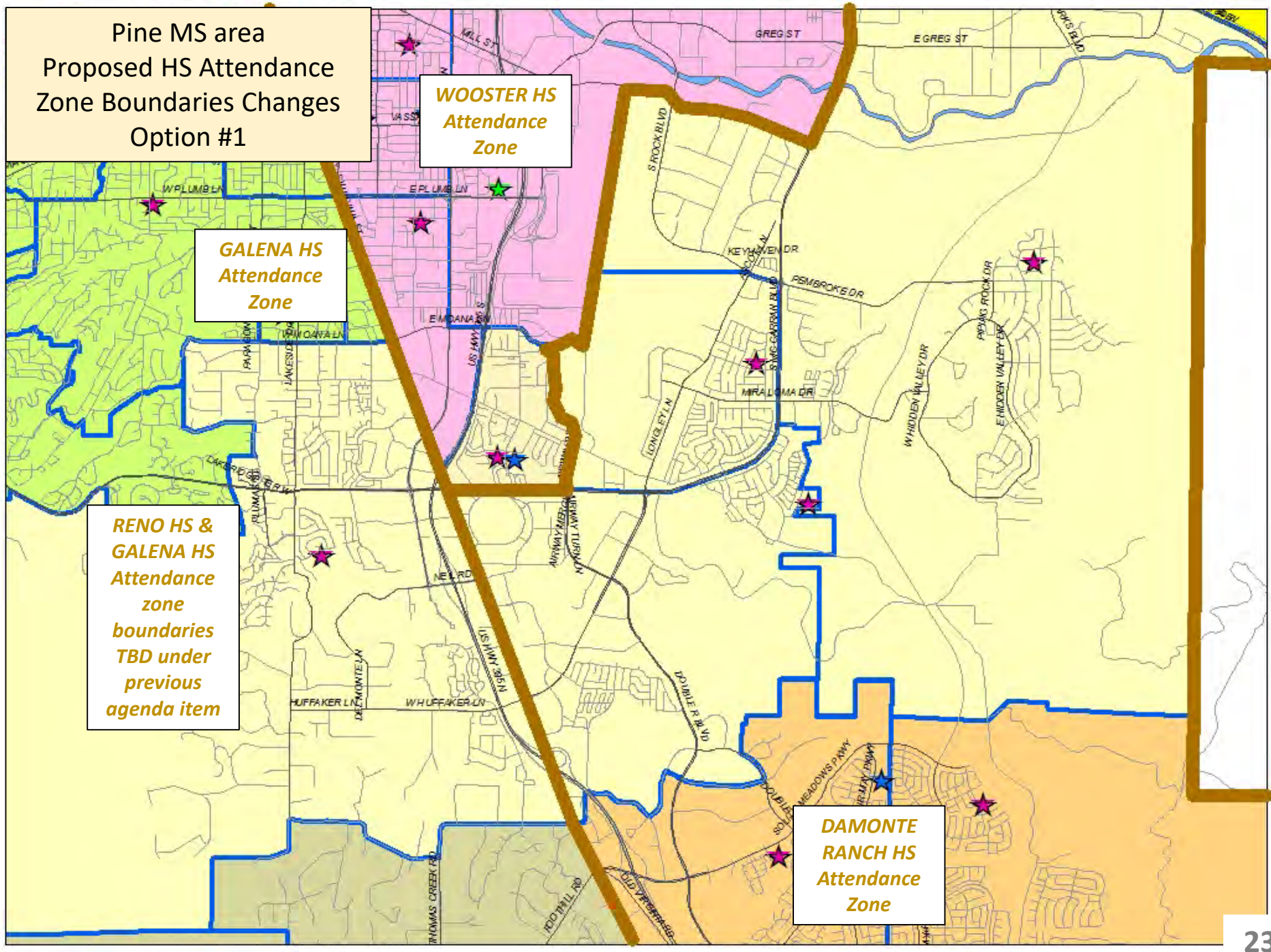
Pine MS area
Proposed HS Attendance
Zone Boundaries Changes
Option #1

**WOOSTER HS
Attendance
Zone**

**GALENA HS
Attendance
Zone**

**RENO HS &
GALENA HS
Attendance
zone
boundaries
TBD under
previous
agenda item**

**DAMONTE
RANCH HS
Attendance
Zone**



Option #1 (original proposal)

- Smithridge to Wooster HS
- Dodson, Donner Springs & Hidden Valley to Damonte Ranch HS

Capacities and projected enrollments, after proposed rezoning actions													
High School	Capacities		Current Enroll. 10/1/2019	Projected Enrollments									
	Max.	Additional Temporary		2020/21	2021/22	2022/23	2023/24	2024/25	2025/26	2026/27	2027/28	2028/29	2029/30
DAMONTE RANCH	2,170	200	1,829	1,897	1,674	1,543	1,368	1,366	1,340	1,381	1,419	1,498	1,569
			84%	87%	77%	71%	63%	63%	62%	64%	65%	69%	72%
WOOSTER	1,796	0	1,604	1,649	1,776	1,751	1,800	1,719	1,653	1,664	1,650	1,641	1,641
			89%	92%	99%	97%	100%	96%	92%	93%	92%	91%	91%

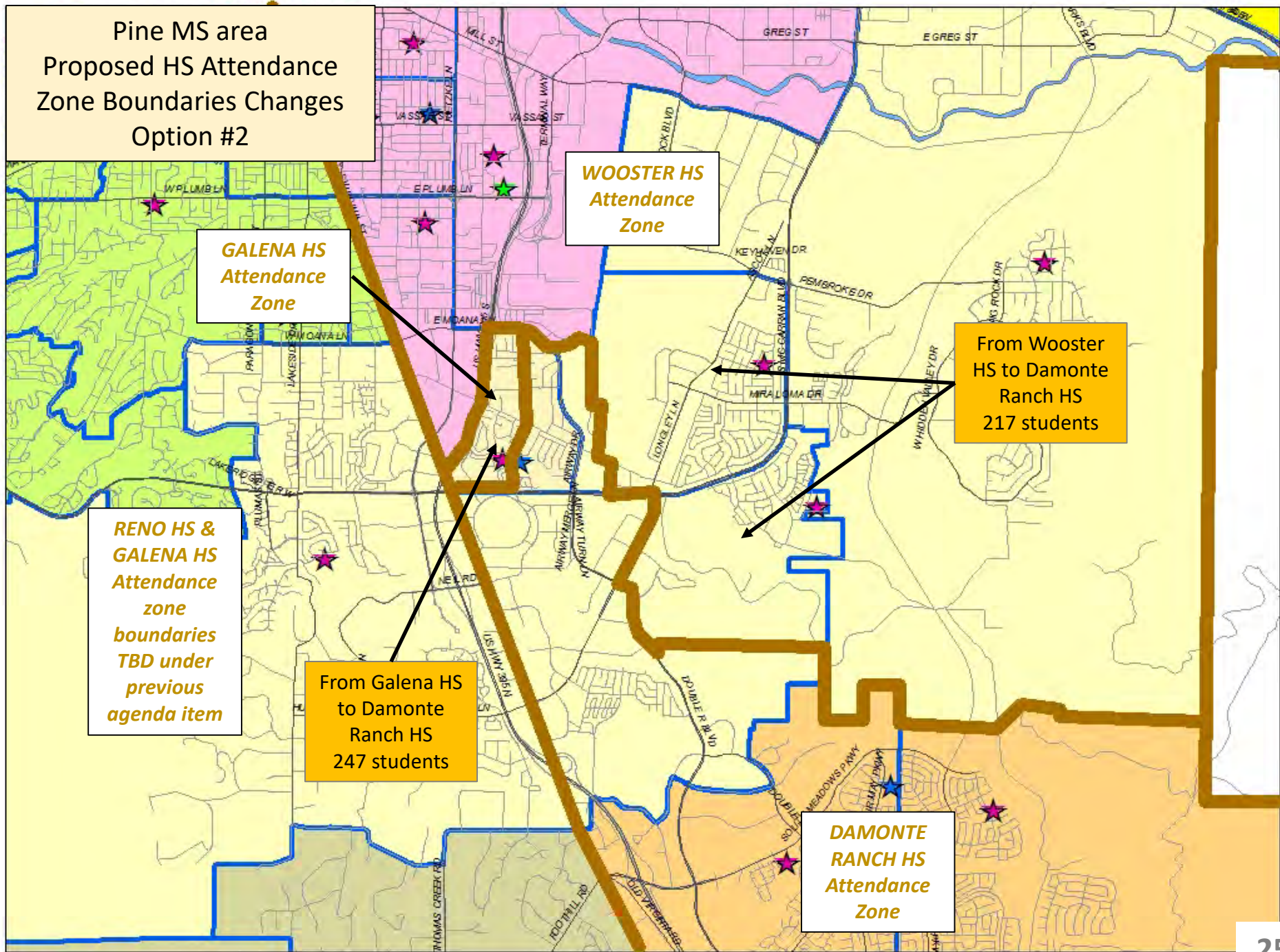
Capacities and projected enrollments, after proposed rezoning actions													
High School	Capacities		Current Enroll. 10/1/2019	Projected Enrollments									
	Max.	Additional Temporary		2020/21	2021/22	2022/23	2023/24	2024/25	2025/26	2026/27	2027/28	2028/29	2029/30
DAMONTE RANCH	2,170	200	1,829	1,897	1,798	1,728	1,615	1,613	1,587	1,628	1,666	1,745	1,816
			84%	87%	83%	80%	74%	74%	73%	75%	77%	80%	84%
WOOSTER	1,796	0	1,604	1,649	1,777	1,752	1,802	1,721	1,655	1,666	1,652	1,643	1,643
			89%	92%	99%	98%	100%	96%	92%	93%	92%	91%	91%

Open Wildcreek HS (2022/23)

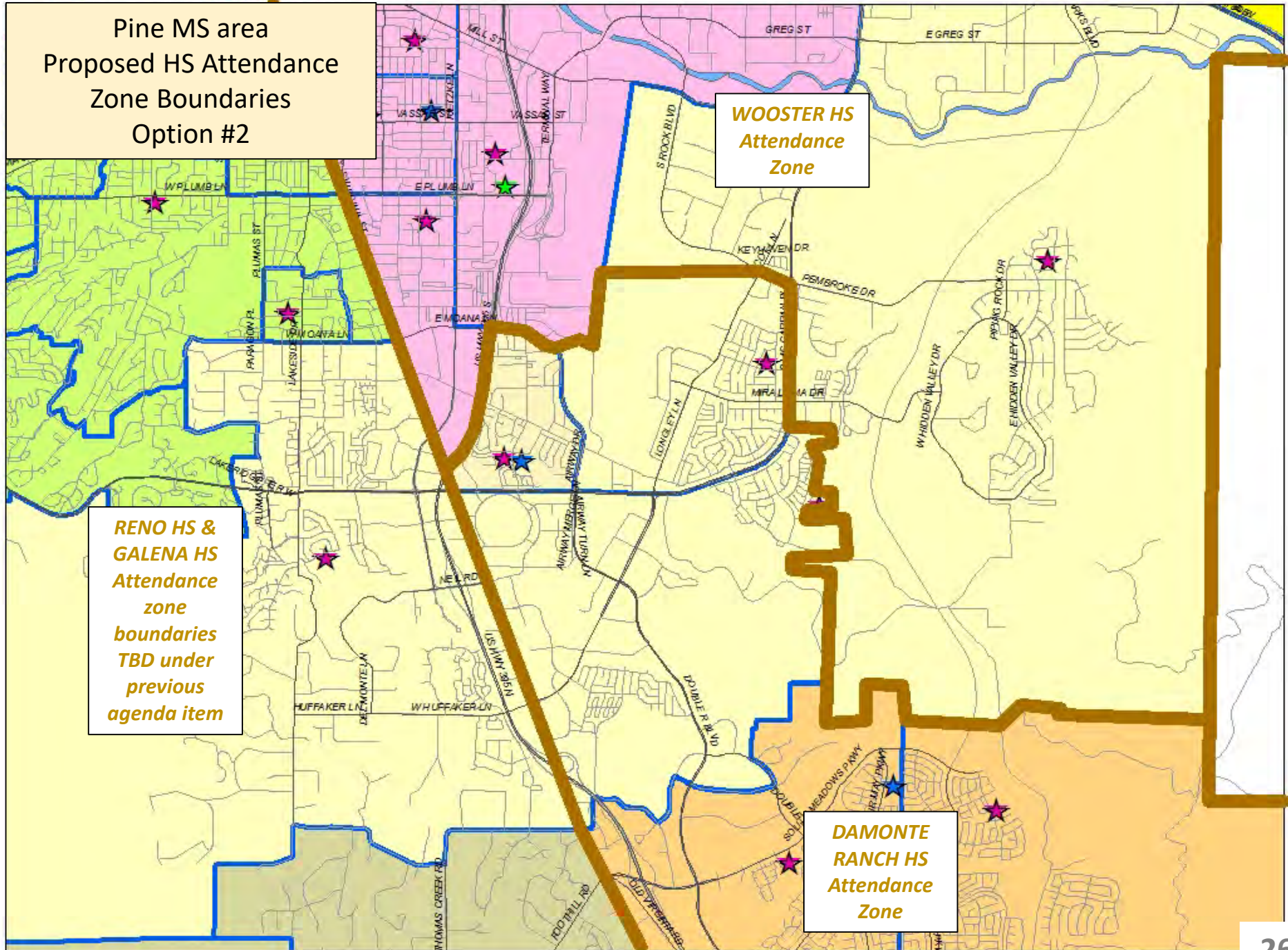
All proposed HS zone changes (2021/22)

Open Hug CTE (2023/24)

Pine MS area
Proposed HS Attendance
Zone Boundaries Changes
Option #2



Pine MS area
Proposed HS Attendance
Zone Boundaries
Option #2



**WOOSTER HS
Attendance
Zone**

**RENO HS &
GALENA HS
Attendance
zone
boundaries
TBD under
previous
agenda item**

**DAMONTE
RANCH HS
Attendance
Zone**

Option #2

- Smithridge, Donner Springs & Dodson to Damonte Ranch HS
- Hidden Valley to stay at Wooster HS

Capacities and projected enrollments, after proposed rezoning actions													
High School	Capacities		Current Enroll. 10/1/2019	Projected Enrollments									
	Max.	Additional Temporary		2020/21	2021/22	2022/23	2023/24	2024/25	2025/26	2026/27	2027/28	2028/29	2029/30
DAMONTE RANCH	2,170	200	1,829 84%	1,897 87%	1,674 77%	1,543 71%	1,368 63%	1,366 63%	1,340 62%	1,381 64%	1,419 65%	1,498 69%	1,569 72%
WOOSTER	1,796	0	1,604 89%	1,649 92%	1,776 99%	1,751 97%	1,800 100%	1,719 96%	1,653 92%	1,664 93%	1,650 92%	1,641 91%	1,641 91%

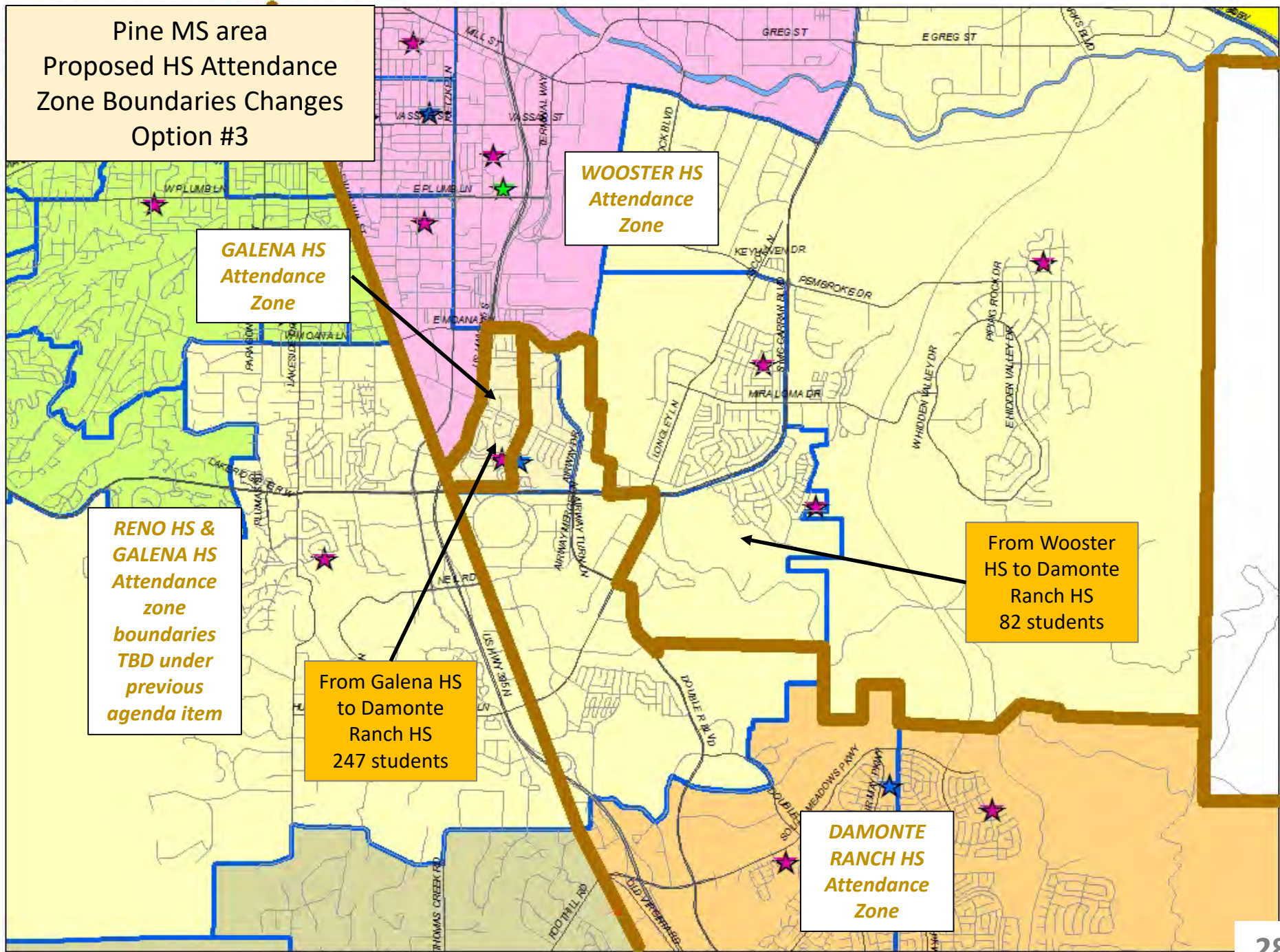
Capacities and projected enrollments, after proposed rezoning actions													
High School	Capacities		Current Enroll. 10/1/2019	Projected Enrollments									
	Max.	Additional Temporary		2020/21	2021/22	2022/23	2023/24	2024/25	2025/26	2026/27	2027/28	2028/29	2029/30
DAMONTE RANCH	2,170	200	1,829 84%	1,897 87%	1,906 88%	1,891 87%	1,817 84%	1,799 83%	1,757 81%	1,784 82%	1,806 83%	1,865 86%	1,916 88%
WOOSTER	1,796	0	1,604 89%	1,649 92%	1,669 93%	1,589 88%	1,600 89%	1,535 85%	1,484 83%	1,510 84%	1,512 84%	1,522 85%	1,543 86%

Open Wildcreek HS (2022/23)

All proposed HS zone changes (2021/22)

Open Hug CTE (2023/24)

Pine MS area
Proposed HS Attendance
Zone Boundaries Changes
Option #3



Option #3

- Dodson to Wooster HS
- Smithridge & Donner Springs to Damonte Ranch HS

Capacities and projected enrollments, after proposed rezoning actions													
High School	Capacities		Current Enroll. 10/1/2019	Projected Enrollments									
	Max.	Additional Temporary		2020/21	2021/22	2022/23	2023/24	2024/25	2025/26	2026/27	2027/28	2028/29	2029/30
DAMONTE RANCH	2,170	200	1,829 84%	1,897 87%	1,674 77%	1,543 71%	1,368 63%	1,366 63%	1,340 62%	1,381 64%	1,419 65%	1,498 69%	1,569 72%
WOOSTER	1,796	0	1,604 89%	1,649 92%	1,776 99%	1,751 97%	1,800 100%	1,719 96%	1,653 92%	1,664 93%	1,650 92%	1,641 91%	1,641 91%

Capacities and projected enrollments, after proposed rezoning actions													
High School	Capacities		Current Enroll. 10/1/2019	Projected Enrollments									
	Max.	Additional Temporary		2020/21	2021/22	2022/23	2023/24	2024/25	2025/26	2026/27	2027/28	2028/29	2029/30
DAMONTE RANCH	2,170	200	1,829 84%	1,897 87%	1,839 85%	1,789 82%	1,682 77%	1,664 77%	1,622 75%	1,649 76%	1,671 77%	1,730 80%	1,781 82%
WOOSTER	1,796	0	1,604 89%	1,649 92%	1,736 97%	1,691 94%	1,735 97%	1,670 93%	1,619 90%	1,645 92%	1,647 92%	1,657 92%	1,678 93%

Open Wildcreek HS (2022/23)

All proposed HS zone changes (2021/22)

Open Hug CTE (2023/24)

Pine MS area
Proposed HS Attendance
Zone Boundaries Changes
Option #4

**GALENA HS
Attendance
Zone**

**WOOSTER HS
Attendance
Zone**

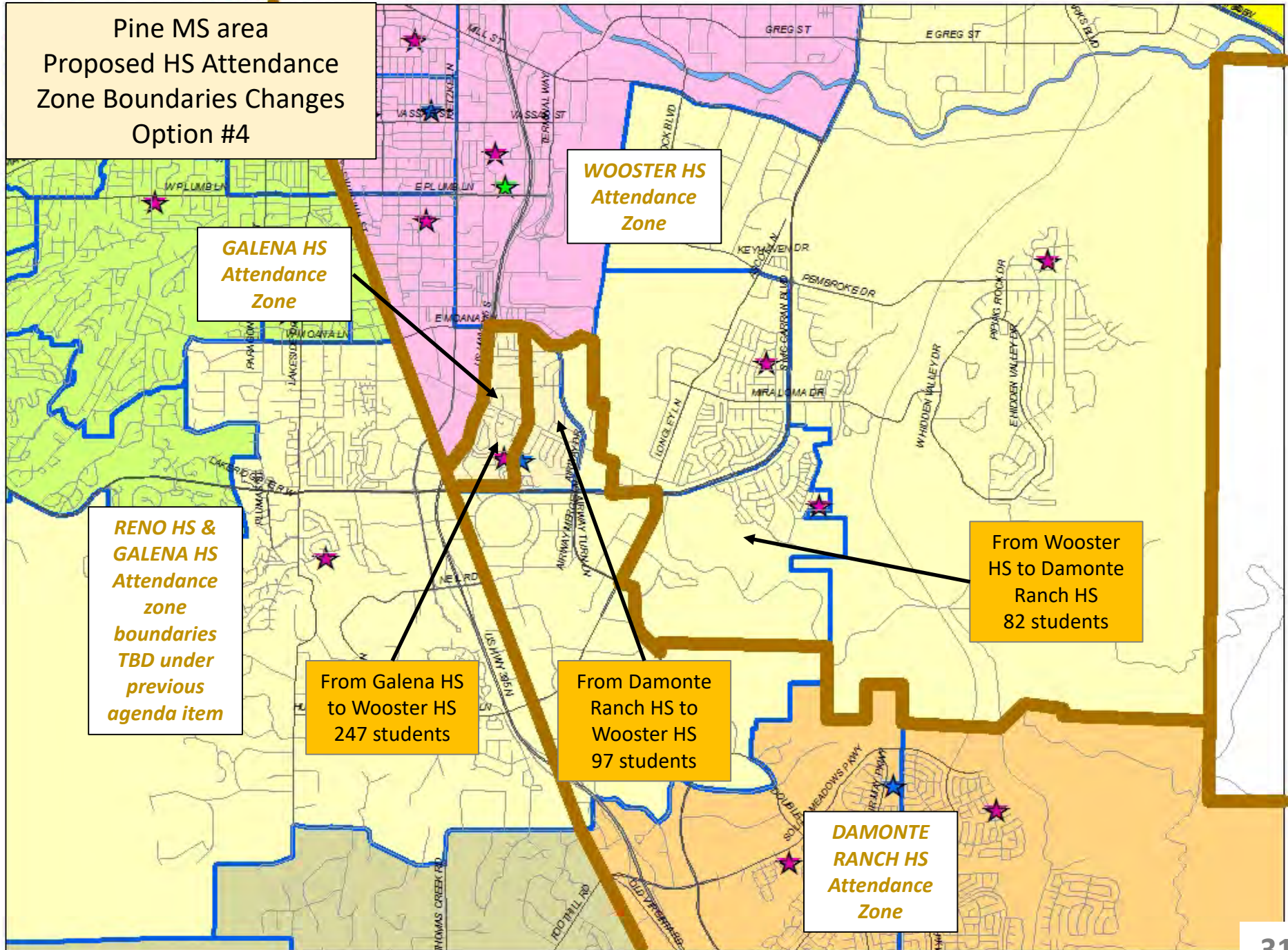
**RENO HS &
GALENA HS
Attendance
zone
boundaries
TBD under
previous
agenda item**

From Galena HS
to Wooster HS
247 students

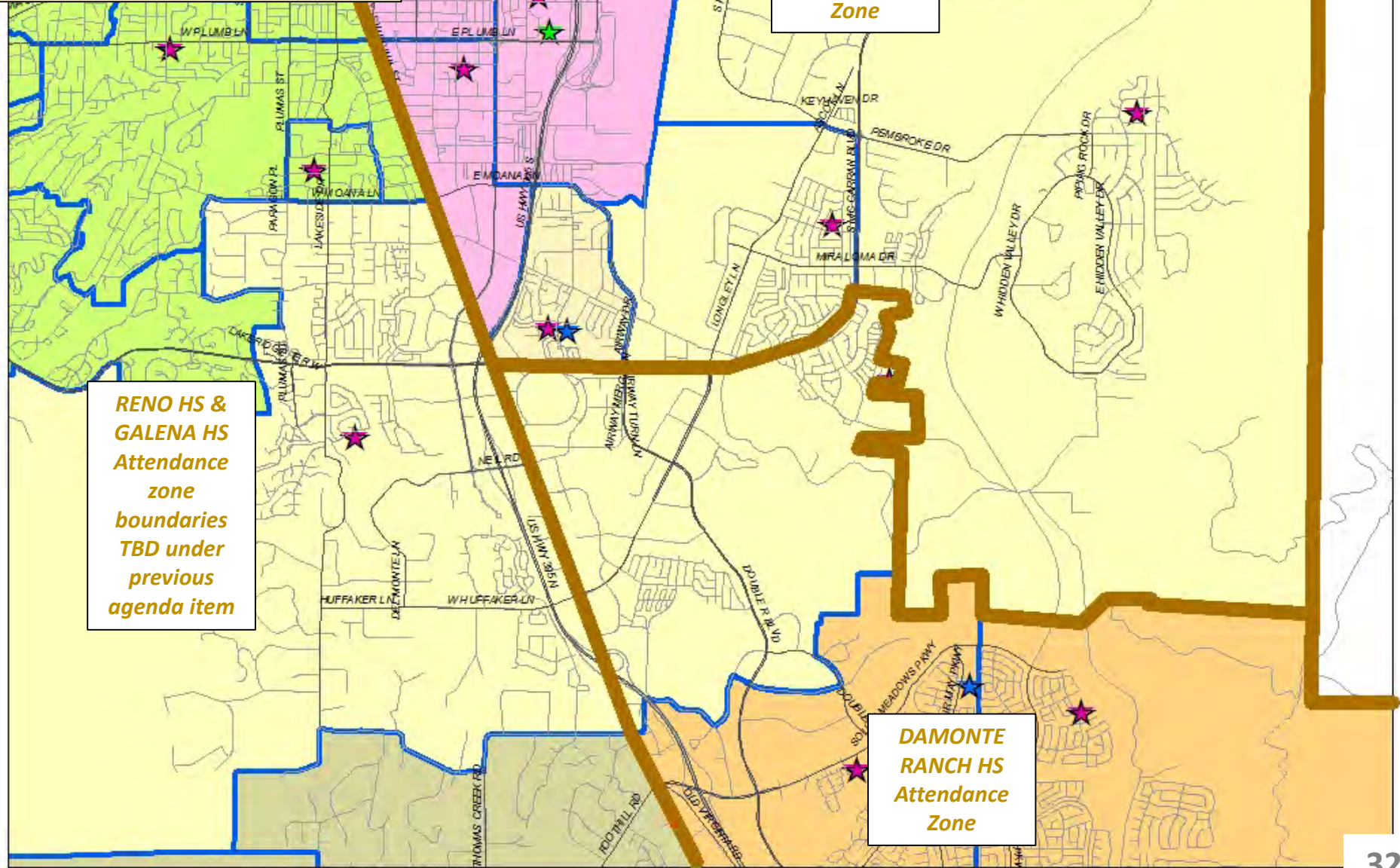
From Damonte
Ranch HS to
Wooster HS
97 students

From Wooster
HS to Damonte
Ranch HS
82 students

**DAMONTE
RANCH HS
Attendance
Zone**



Pine MS area
Proposed HS Attendance
Zone Boundaries
Option #4



**WOOSTER HS
Attendance
Zone**

**RENO HS &
GALENA HS
Attendance
zone
boundaries
TBD under
previous
agenda item**

**DAMONTE
RANCH HS
Attendance
Zone**

Option #4

- Smithridge and Dodson to Wooster HS
- Donner Springs to Damonte Ranch HS

Capacities and projected enrollments, after proposed rezoning actions													
High School	Capacities		Current Enroll. 10/1/2019	Projected Enrollments									
	Max.	Additional Temporary		2020/21	2021/22	2022/23	2023/24	2024/25	2025/26	2026/27	2027/28	2028/29	2029/30
DAMONTE RANCH	2,170	200	1,829 84%	1,897 87%	1,674 77%	1,543 71%	1,368 63%	1,366 63%	1,340 62%	1,381 64%	1,419 65%	1,498 69%	1,569 72%
WOOSTER	1,796	0	1,604 89%	1,649 92%	1,776 99%	1,751 97%	1,800 100%	1,719 96%	1,653 92%	1,664 93%	1,650 92%	1,641 91%	1,641 91%

Capacities and projected enrollments, after proposed rezoning actions													
High School	Capacities		Current Enroll. 10/1/2019	Projected Enrollments									
	Max.	Additional Temporary		2020/21	2021/22	2022/23	2023/24	2024/25	2025/26	2026/27	2027/28	2028/29	2029/30
DAMONTE RANCH	2,170	200	1,829 84%	1,897 87%	1,667 77%	1,531 71%	1,338 62%	1,320 61%	1,278 59%	1,305 60%	1,327 61%	1,386 64%	1,437 66%
WOOSTER	1,796	0	1,604 89%	1,649 92%	1,908 106%	1,949 109%	2,079 116%	2,014 112%	1,963 109%	1,989 111%	1,991 111%	2,001 111%	2,022 113%

Open Wildcreek HS (2022/23)

All proposed HS zone changes (2021/22)

Open Hug CTE (2023/24)

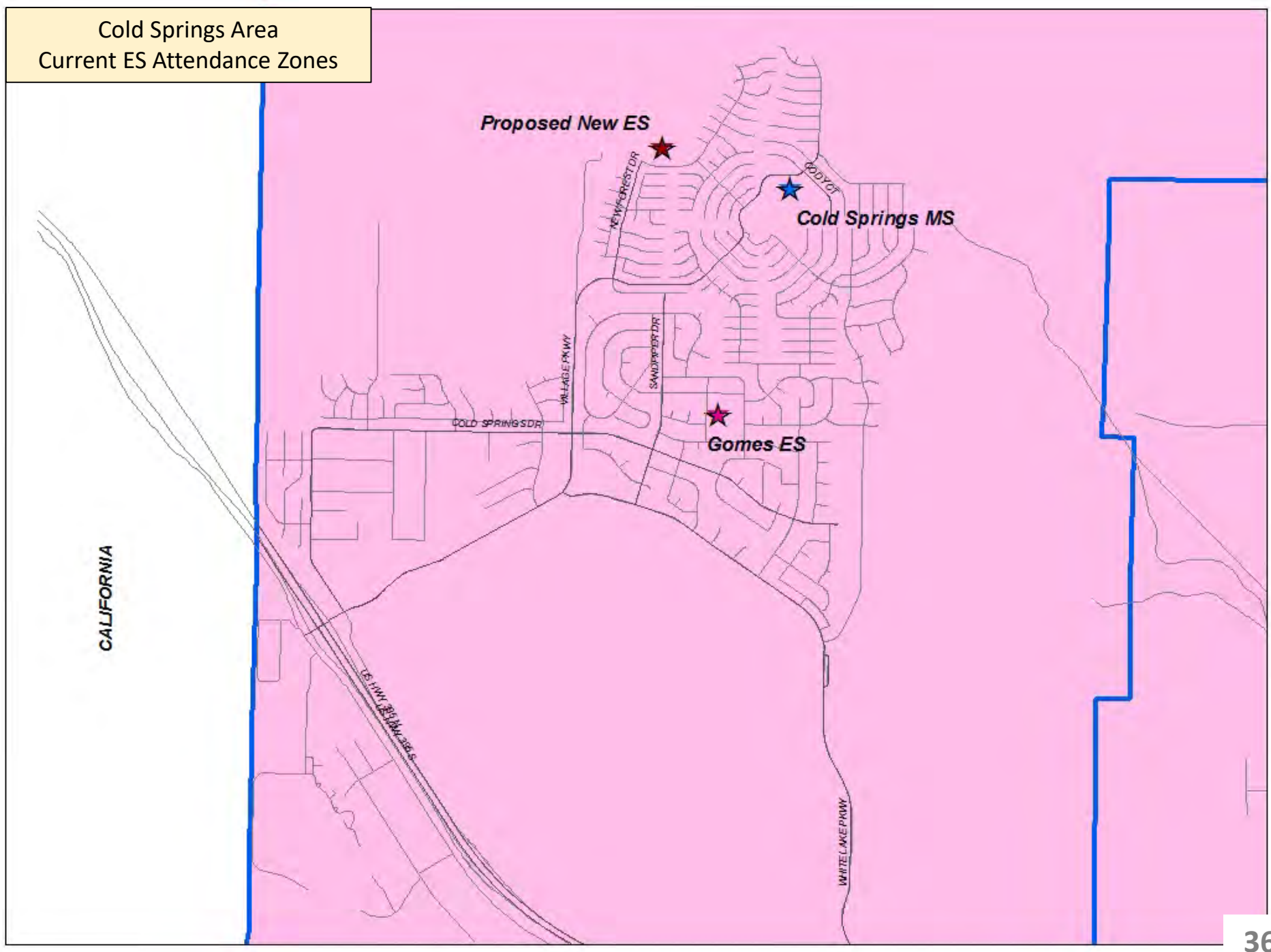
SUMMARY OF OPTIONS FOR PINE MS AREA			School Capacity Impact	
Option	Description	Students impacted	DRHS	Wooster HS
#1	Smithridge to Wooster HS	97 students from DRHS to Wooster HS	2024 = 74% 2029 = 84%	2024 = 96% 2029 = 91%
		247 students from Galena HS to Wooster HS		
	Dodson, Donner Springs, Hidden Valley to Damonte Ranch HS	344 students from Wooster HS to DRHS		
#2	Dodson, Donner Springs, Smithridge to Damonte Ranch HS	247 students from Galena HS to DRHS	2024 = 83% 2029 = 88%	2024 = 85% 2029 = 86%
		217 students from Wooster to DRHS		
	Hidden Valley area remains at Wooster HS	No students rezoned		
#3	Donner Springs, Smithridge to DRHS	247 students from Galena HS to Wooster HS	2024 = 77% 2029 = 82%	2024 = 93% 2029 = 93%
		82 students from Wooster HS to DRHS		
	Dodson and Hidden Valley remain at Wooster HS	No students rezoned		
#4	Donner Springs to DRHS	82 students from Wooster HS to DRHS	2024 = 61% 2029 = 66%	2024 = 112% 2029 = 113%
	Smithridge to Wooster HS	247 students from Galena HS to Wooster HS		
		97 students from DRHS to Wooster HS		
	Dodson and Hidden Valley remain at Wooster HS	No students rezoned		

Agenda item 2.06

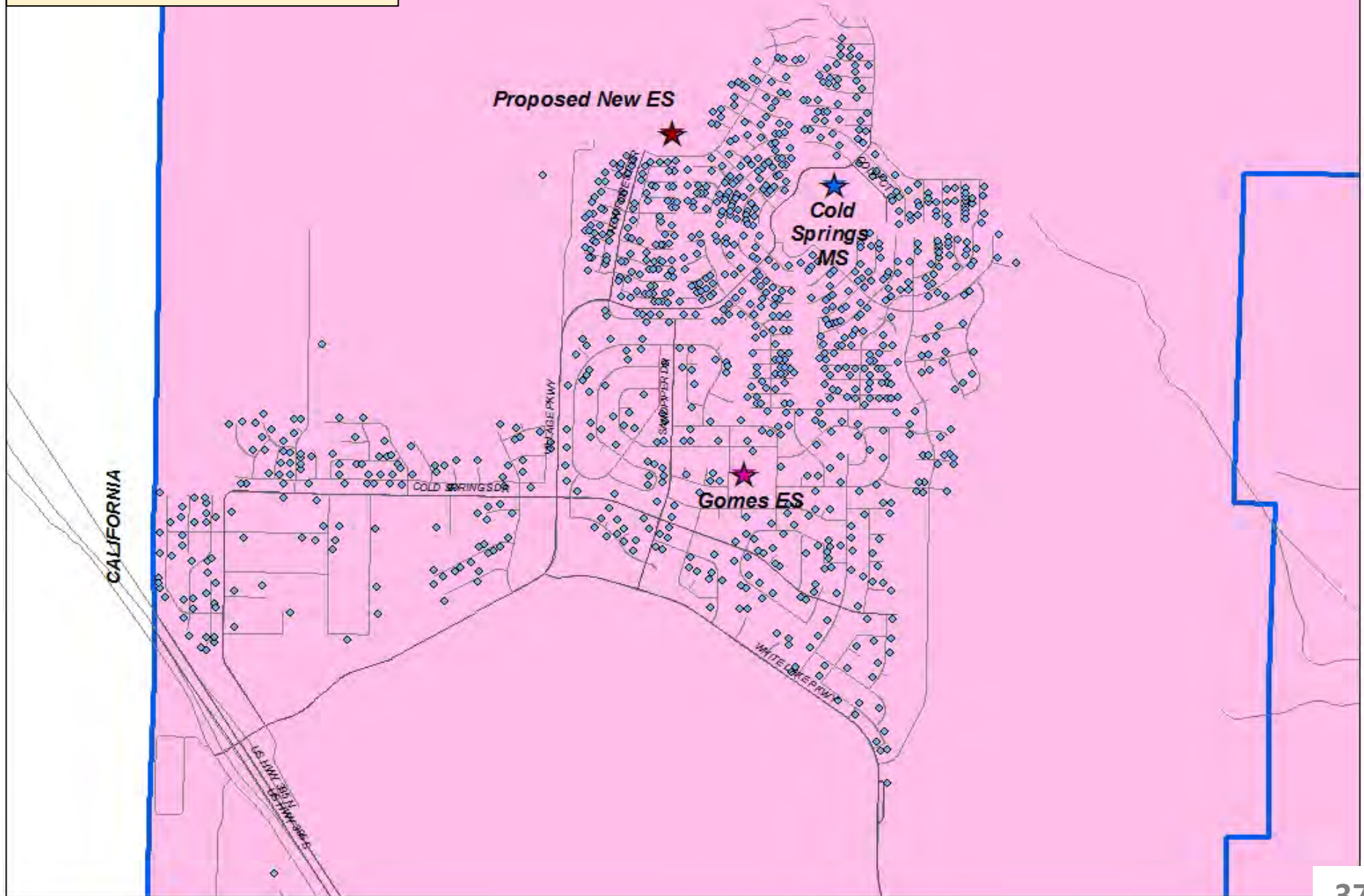
Discussion regarding a new elementary school being built in the Cold Springs area and potential zoning changes that could affect Gomes Elementary School, Silver Lake Elementary School, Cold Springs Middle School and O'Brien Middle School.

(For Discussion Only)

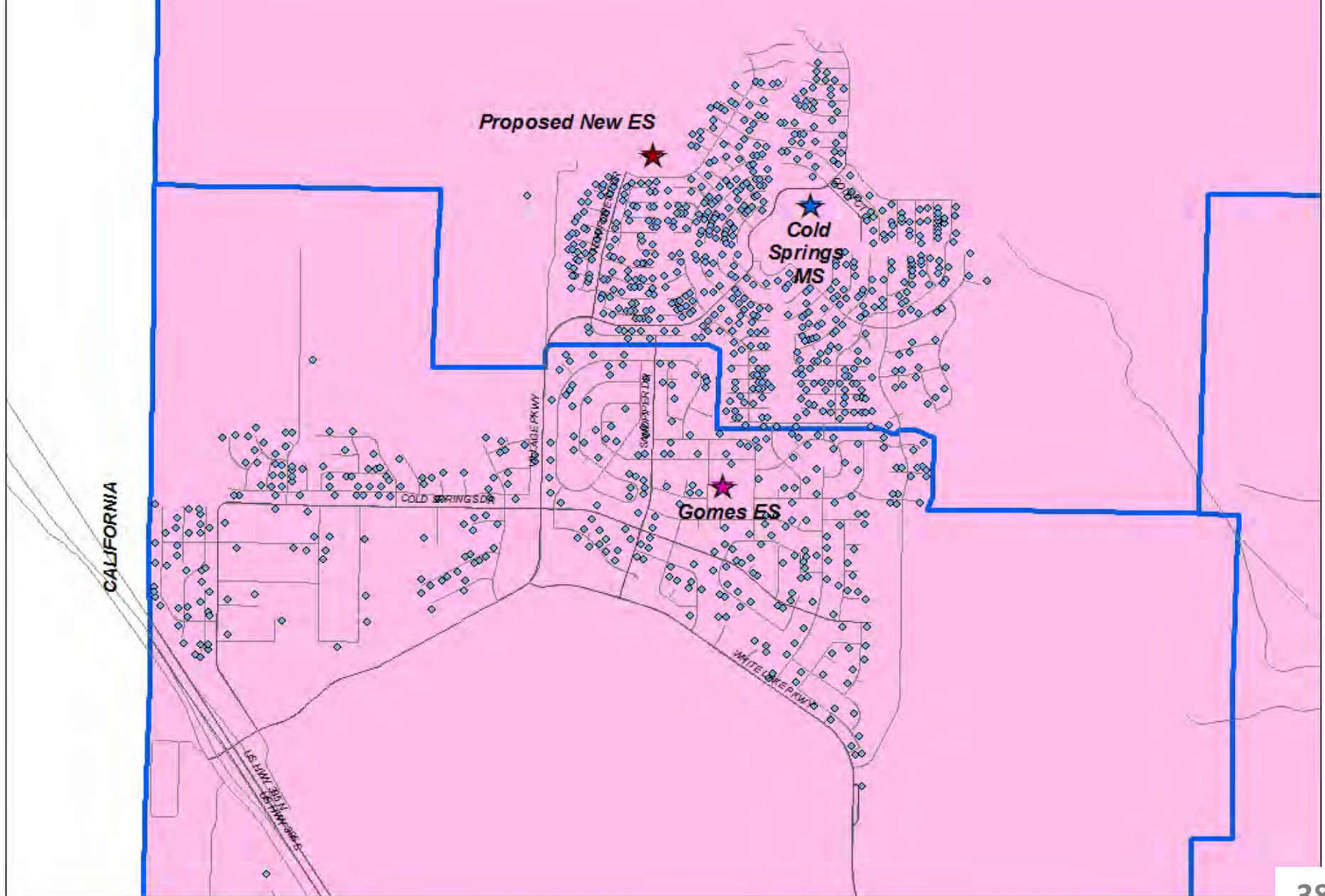
Cold Springs Area
Current ES Attendance Zones



Cold Springs Area
Current ES Attendance Zones
and Current Students



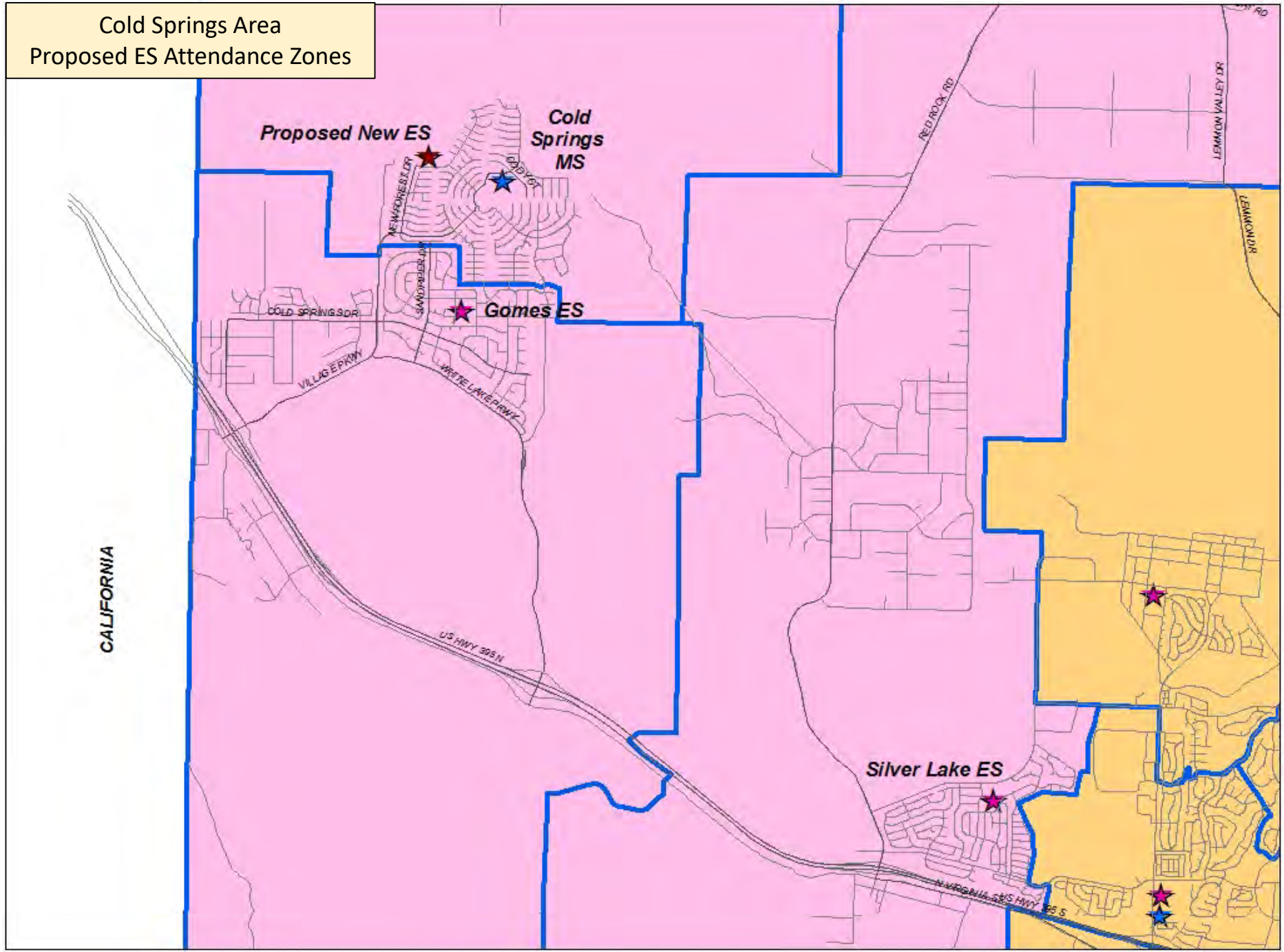
Cold Springs Area
Proposed ES Attendance Zones

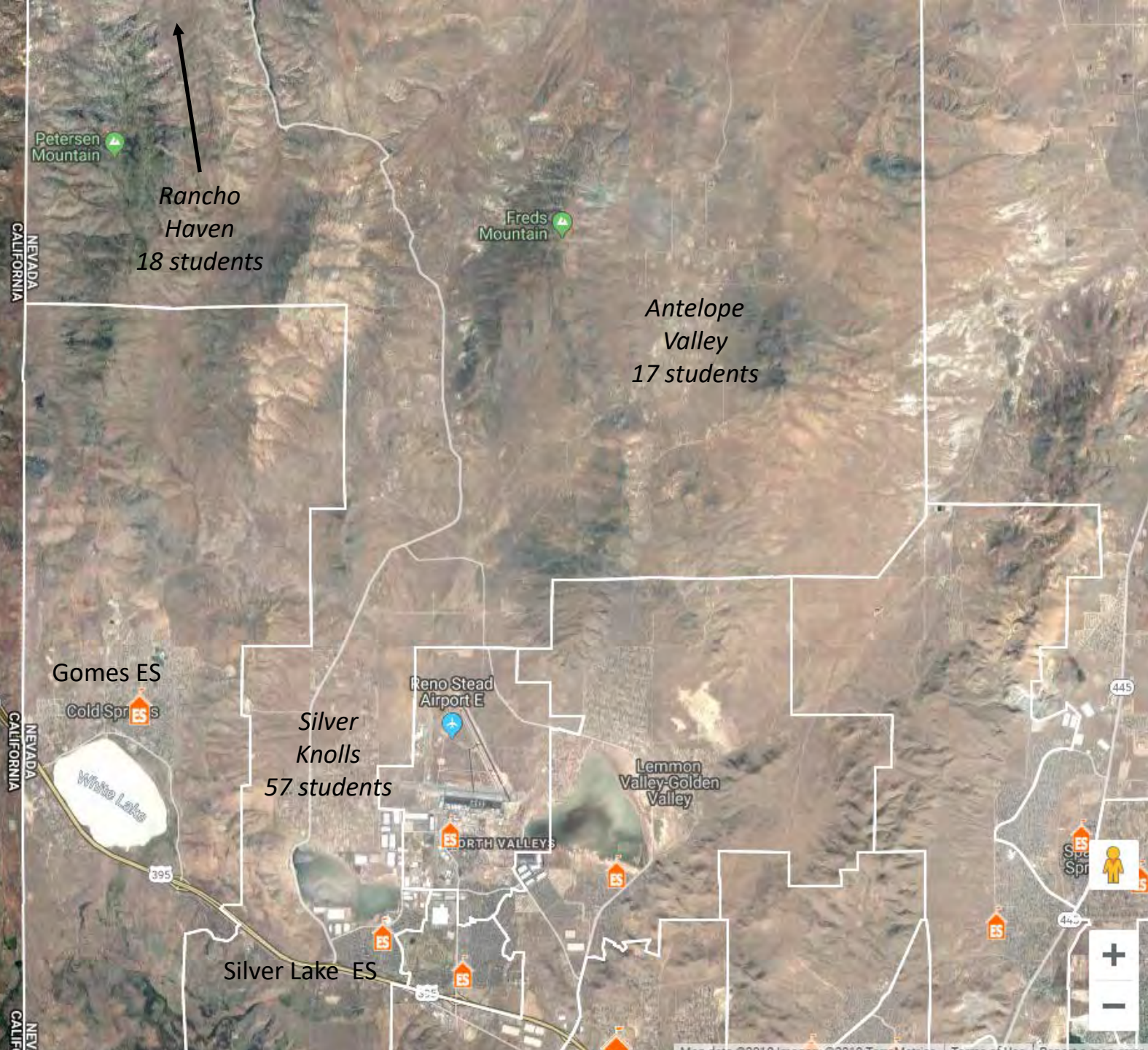


Cold Springs Area
Proposed ES Attendance Zone
Boundary



Cold Springs Area
Proposed ES Attendance Zones





Petersen Mountain

Rancho Haven
18 students

Freds Mountain

Antelope Valley
17 students

Gomes ES

Cold Springs ES

Silver Knolls
57 students

Reno Stead Airport E

Lemmon Valley-Golden Valley

Silver Lake ES

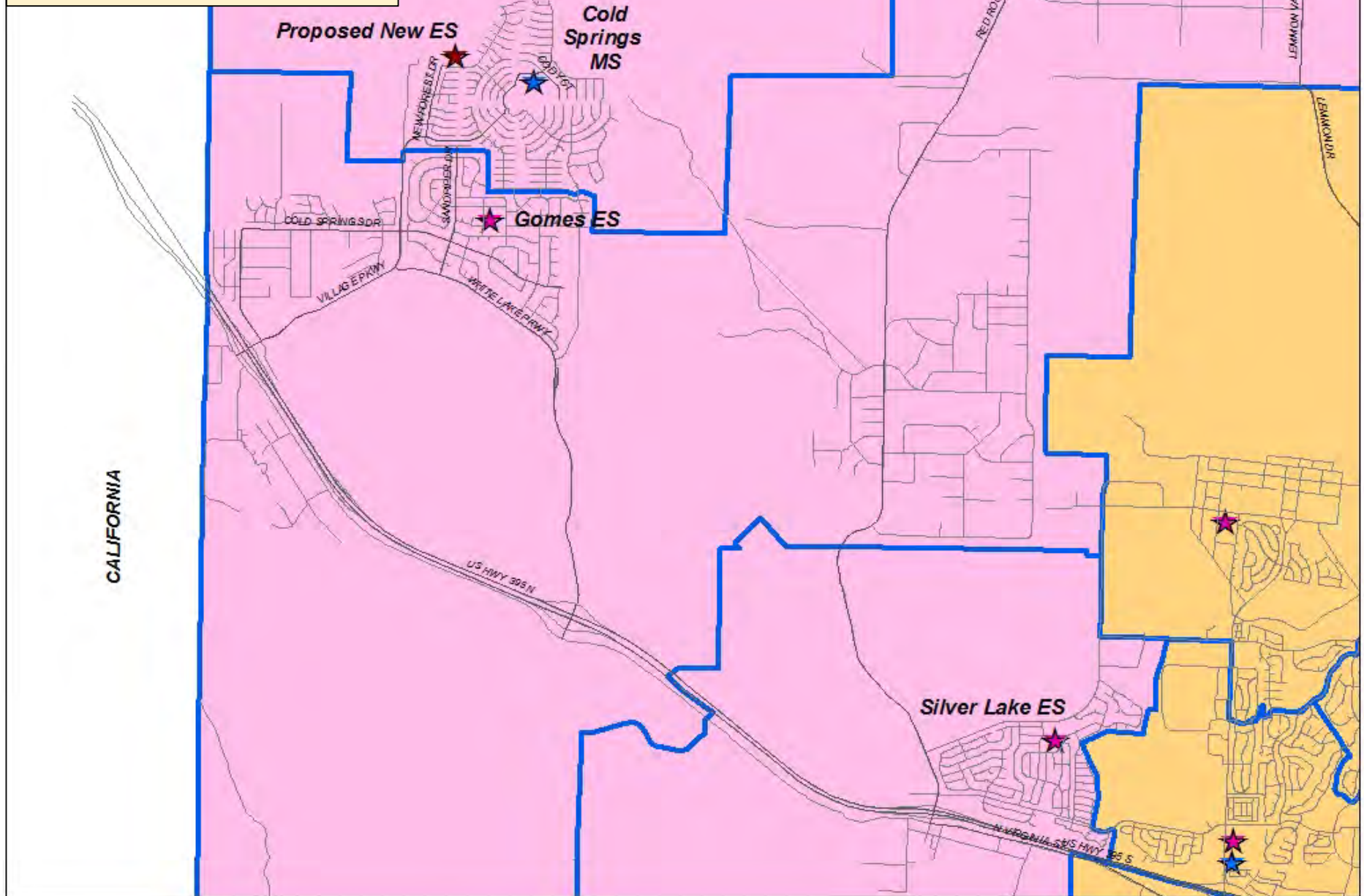
NEVADA
CALIFORNIA

NEVADA
CALIFORNIA

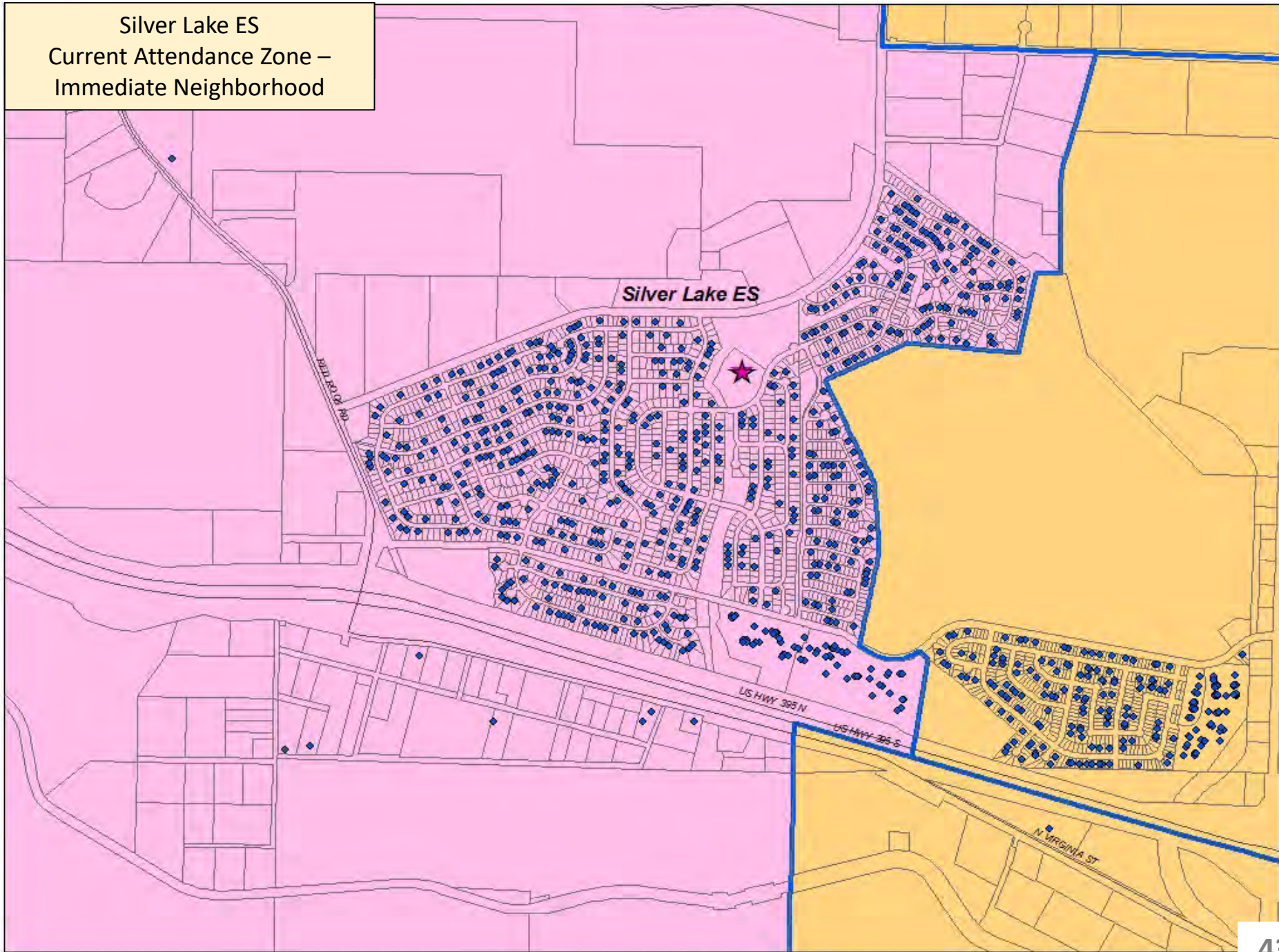
NEVADA
CALIFORNIA



Cold Springs Area
Potential ES Attendance Zone
change to Silver Lake ES



Silver Lake ES
Current Attendance Zone –
Immediate Neighborhood



Capacities and Projected enrollments, prior to any actions

School	Capacities		Current Enroll. 10/1/2019	Projected Enrollments									
	Max.	Temporary		2020/21	2021/22	2022/23	2023/24	2024/25	2025/26	2026/27	2027/28	2028/29	2029/30
GOMES	491	150	610	615	638	647	652	693	717	755	783	812	834
			124%	125%	130%	132%	133%	141%	146%	154%	159%	165%	170%
SILVER LAKE	531	100	544	544	540	524	529	532	531	536	549	564	587
			102%	102%	102%	99%	100%	100%	100%	101%	103%	106%	111%
COLD SPRINGS MS	1,440	0	1,001	1,010	1,007	1,044	1,067	1,105	1,159	1,205	1,246	1,289	1,334
			70%	70%	70%	73%	74%	77%	80%	84%	87%	90%	93%

Capacities and Projected enrollments, based on recommended boundary changes between Gomes ES and proposed new elementary school, and the return of the Gomes 5th grade students to their respective elementary schools

School	Capacities		Current Enroll. 10/1/2019	Projected Enrollments									
	Max.	Temporary		2020/21	2021/22	2022/23	2023/24	2024/25	2025/26	2026/27	2027/28	2028/29	2029/30
GOMES	491	150	610	615	349	362	369	373	375	367	361	359	368
			124%	125%	71%	74%	75%	76%	76%	75%	74%	73%	75%
SILVER LAKE	531	100	544	544	540	524	529	532	531	536	549	564	587
			102%	102%	102%	99%	100%	100%	100%	101%	103%	106%	111%
New Cold Springs ara ES	682	0	--	--	422	427	433	489	517	569	606	651	675
			--	--	62%	63%	63%	72%	76%	83%	89%	95%	99%
COLD SPRINGS MS	1,440	0	1,001	1,010	874	902	917	936	984	1,024	1,062	1,091	1,125
			70%	70%	61%	63%	64%	65%	68%	71%	74%	76%	78%

Capacities and Projected enrollments, as above + return of Silver Lake 5th grade students

School	Capacities		Current Enroll. 10/1/2019	Projected Enrollments									
	Max.	Additional Temporary		2020/21	2021/22	2022/23	2023/24	2024/25	2025/26	2026/27	2027/28	2028/29	2029/30
GOMES	491	150	610 124%	615 125%	349 71%	362 74%	369 75%	373 76%	375 76%	367 75%	361 74%	359 73%	368 75%
SILVER LAKE	531	100	544 102%	544 102%	638 120%	622 117%	627 118%	630 119%	629 118%	634 119%	647 122%	662 125%	685 129%
New Cold Springs ara ES	682	0	-- --	-- --	422 62%	427 63%	433 63%	489 72%	517 76%	569 83%	606 89%	651 95%	675 99%
COLD SPRINGS MS	1,440	0	1,001 70%	1,010 70%	762 53%	786 55%	819 57%	832 58%	872 61%	912 63%	957 66%	979 68%	1,009 70%

Capacities and Projected enrollments, as above + rezone of Silver Knolls and the Silver Lake rural area to Gomes + return of Silver Lake 5th grade students to their respective elementary schools

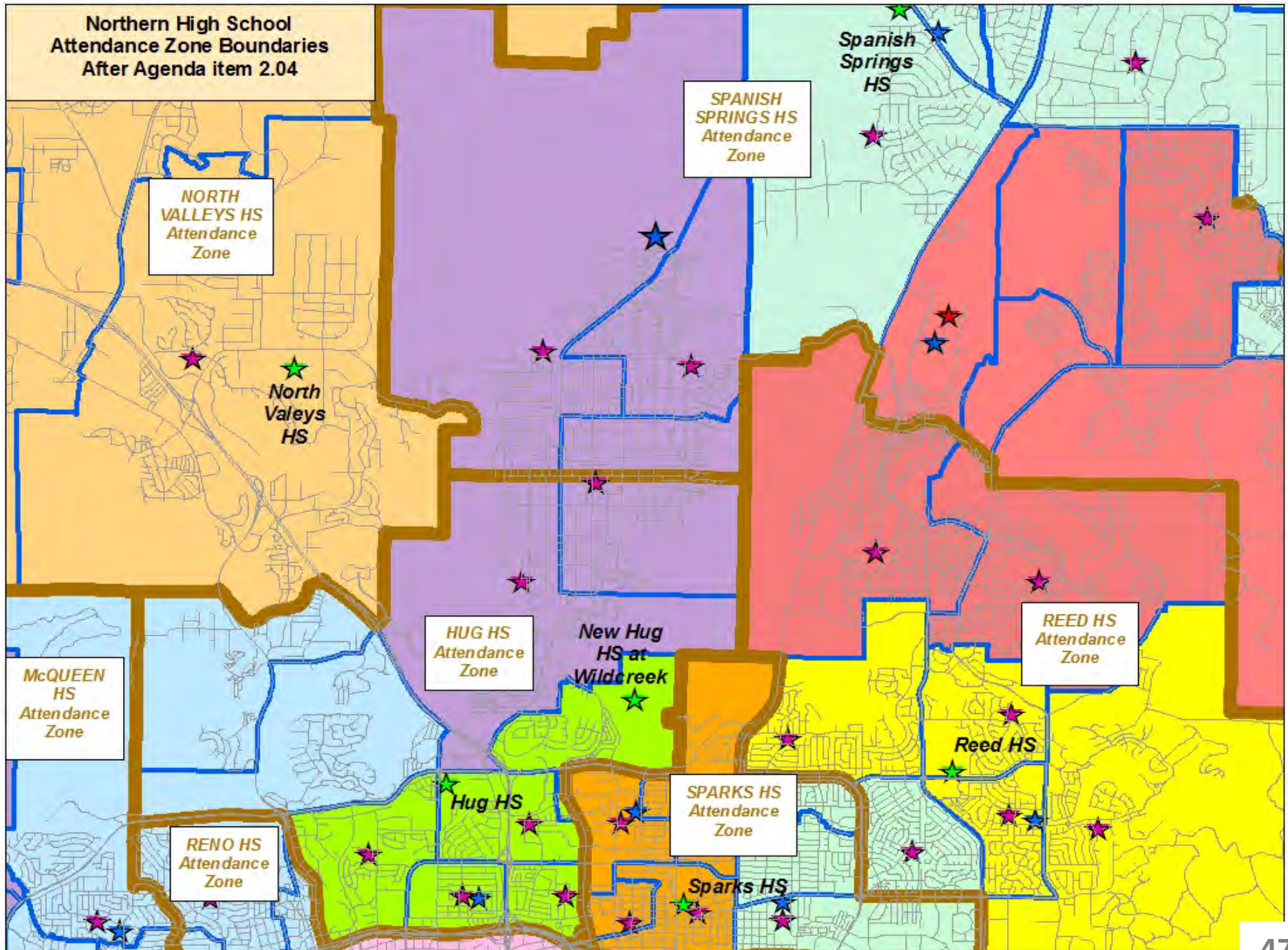
School	Capacities		Current Enroll. 10/1/2019	Projected Enrollments									
	Max.	Additional Temporary		2020/21	2021/22	2022/23	2023/24	2024/25	2025/26	2026/27	2027/28	2028/29	2029/30
GOMES	491	150	610 124%	615 125%	438 89%	446 91%	438 89%	443 90%	448 91%	444 90%	442 90%	452 92%	481 98%
SILVER LAKE	531	100	544 102%	544 102%	563 106%	556 105%	558 105%	566 107%	570 107%	571 108%	573 108%	583 110%	590 111%
New Cold Springs ara ES	682	0	-- --	-- --	422 62%	427 63%	433 63%	489 72%	517 76%	569 83%	606 89%	651 95%	675 99%
COLD SPRINGS MS	1,440	0	1,001 70%	1,010 70%	762 53%	786 55%	819 57%	832 58%	872 61%	912 63%	957 66%	979 68%	1,009 70%

Agenda item 2.07

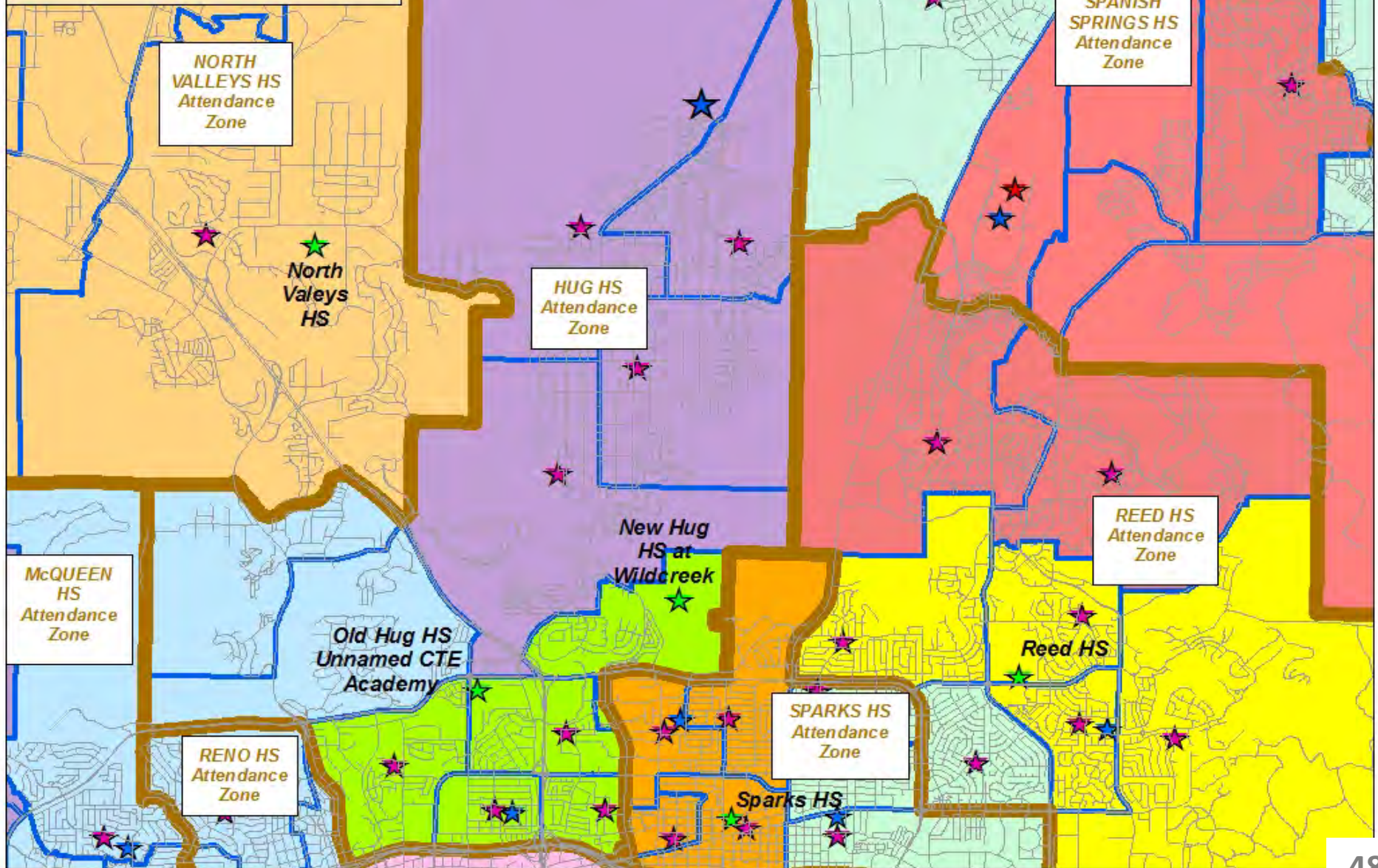
Discussion regarding the new Procter Hug High School being built in the Wildcreek area and potential zoning boundaries that could affect the Spanish Springs High School and current Hug High School zoning boundaries.

(For Possible Action)

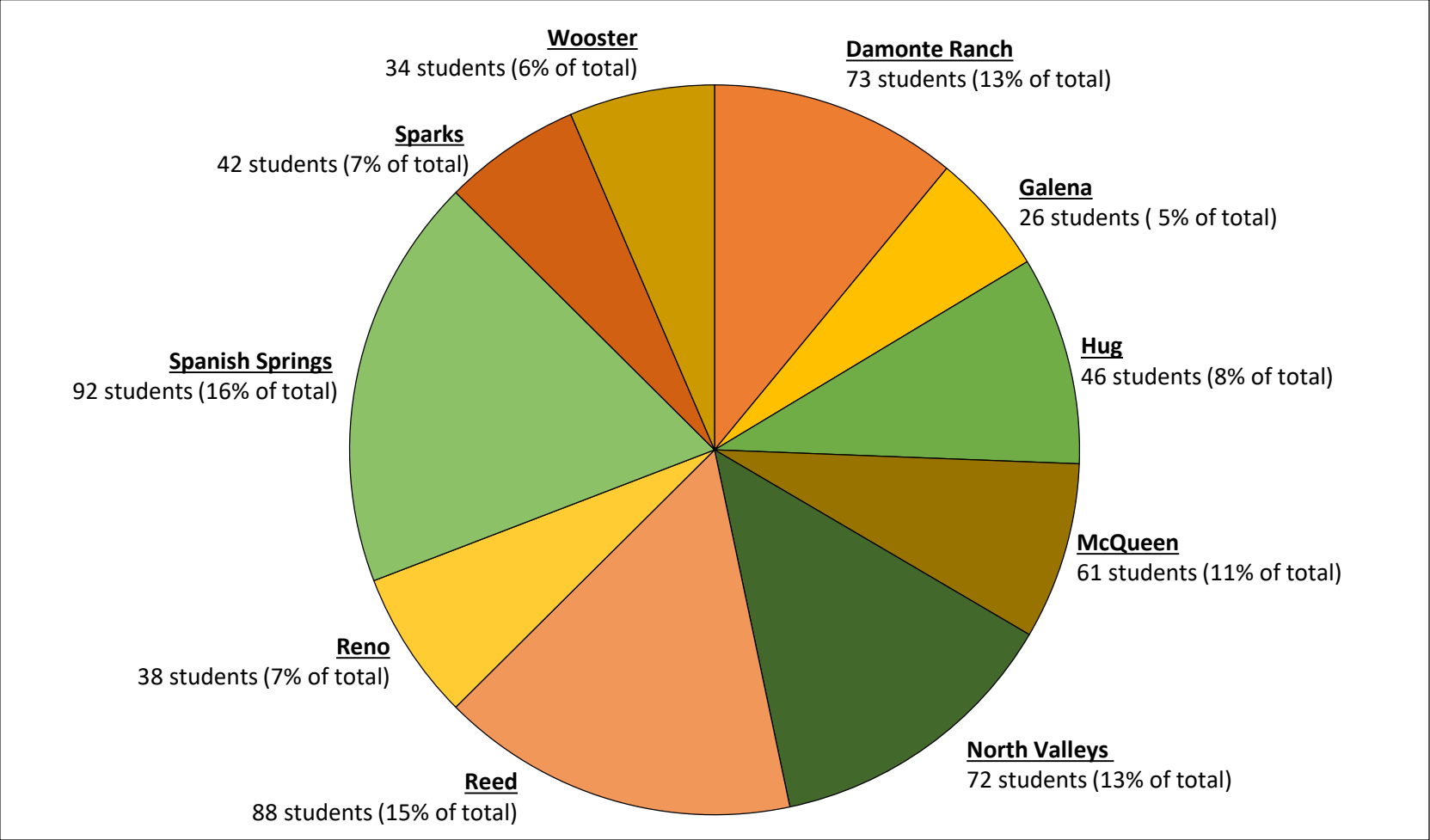
**Northern High School
Attendance Zone Boundaries
After Agenda item 2.04**



**Northern High School
Attendance Zone Boundaries
After Agenda item 2.04 &
Proposed Hug HS
Attendance Zone**



Zoned high schools for students attending AACT, 2019/20



Total Enrollment as of 10/01/2019 = 569